

# Archimedes liam f1 Romania





## Archimedes liam f1 Romania

---



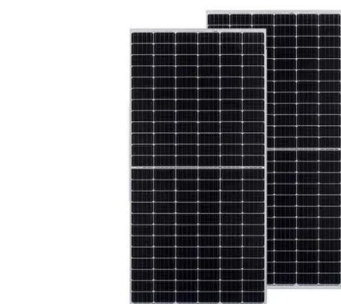
51.2V 150AH, 7.68KWH

### Liam F1 Mini Urban Wind Turbine: Revolutionizing ...

Meet the Liam F1 Mini Urban Wind Turbine by Archimedes - a compact and innovative wind turbine specifically designed for urban and suburban environments. This sleek, efficient turbine is set to change the way ...

### Liam F1

The Archimedes is an innovative wind turbine design: small, silent, and affordable. Based upon the writings and methods of the Greek mathematician Archimedes the design mimics a shellfish, the Nautilidae (translated



### Screwy-looking wind turbine makes little noise and a ...

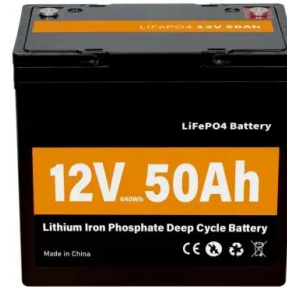
Rotterdam-based tech firm The Archimedes has officially introduced its Liam F1 Urban Wind Turbine. The company claims that it has an energy yield that is "80 percent of the maximum that is

### Re-inventing the Windmill by The Archimedes

The Archimedes windmill is a new type of wind turbine comprising three circular blades which are wrapped around one another and then expanded. This creates a three-dimensional



conical turbine, similar to elongated shells found on the beach. The special design ensures that wind is drawn into the turbine.

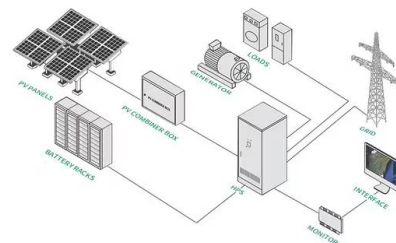


### Liam F1 Wind Turbine: A Small Scale Wind Energy ...

The Liam F1 Wind Turbine is a small, vertical-axis wind turbine (VAWT) designed for maximum efficiency in urban and residential areas. Created by the Dutch company The Archimedes, it is named after the Greek ...

### Liam F1 Wind Turbine: A Small Scale Wind Energy Game Changer

The Liam F1 Wind Turbine is a small, vertical-axis wind turbine (VAWT) designed for maximum efficiency in urban and residential areas. Created by the Dutch company The Archimedes, it is named after the Greek mathematician Archimedes, whose principles inspired the turbine's design.



### A Silent Wind Turbine For Urban Use , Elektor Magazine

The Dutch startup The Archimedes launched the Liam F1, a mini wind turbine with a 1,5 KW output generator. With its design based on a nautilus shell it noiselessly generates electricity which makes it suitable for residential ...



## Liam F1 Mini Urban Wind Turbine: Revolutionizing Sustainable ...

Meet the Liam F1 Mini Urban Wind Turbine by Archimedes - a compact and innovative wind turbine specifically designed for urban and suburban environments. This sleek, efficient turbine is set to change the way city dwellers harness clean energy, offering up to 1,500 kWh of free electricity per year, all while remaining virtually silent.



### Liam F1: Turbina eoliana silentioasa

Lansarea Liam F1 de catre Archimedes ar putea marca o noua era în exploatarea energiei eoliene în orase. Designul sau unic si performantele tehnice avansate ar putea ...

### Liam F1: Turbina eoliana silentioasa

Lansarea Liam F1 de catre Archimedes ar putea marca o noua era în exploatarea energiei eoliene în orase. Designul sau unic si performantele tehnice avansate ar putea încuraja o adoptare mai larga a turbinelor eoliene de mici dimensiuni în locuinte, cladiri comerciale si infrastructuri urbane.



### A Silent Wind Turbine For Urban Use , Elektor Magazine

The Dutch startup The Archimedes launched the Liam F1, a mini wind turbine with a 1,5 KW output generator. With its design based on a nautilus shell it noiselessly generates electricity which makes it suitable for residential use.



## Screwy-looking wind turbine makes little noise and a big claim

Rotterdam-based tech firm The Archimedes has officially introduced its Liam F1 Urban Wind Turbine. The company claims that it has an energy yield that is "80 percent of the maximum that is



## Taking care of you, safely and soundly Urban

Designed for urban surroundings, the Liam is exceptionally suitable for family homes, public and commercial- and high-rise buildings. This Dutch design handles turbulence like no other wind ...

## Liam F1: Silent wind turbine

The Dutch company Archimedes recently launched the Liam F1 wind turbine, a cutting-edge wind energy innovation from a startup company. The turbine is a breakthrough in renewable energy technology, designed to operate almost noiselessly, with high efficiency and compatible with urban landscapes.



## Taking care of you, safely and soundly Urban

Designed for urban surroundings, the Liam is exceptionally suitable for family homes, public and commercial- and high-rise buildings. This Dutch design handles turbulence like no other wind turbine. In fact, multiple Archimedes wind turbines can be placed in close range of each other, preferably in a triangular pattern.





## Contact Us

---

For catalog requests, pricing, or partnerships, please visit:  
<https://www.fundacja64.pl>