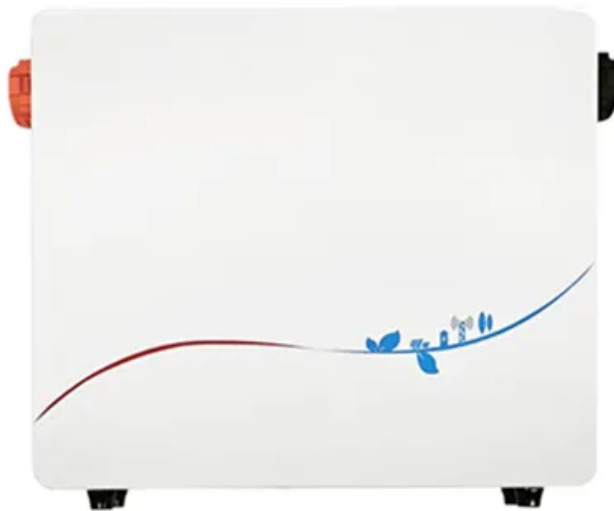


B box premium hv battery control unit base Suriname





B box premium hv battery control unit base Suriname



Battery-Box Premium HVM & HVS BCU + Base (battery control unit)

BATTERY-BOX PREMIUM HVS & HVM BASE. This part contains 1x Battery Base with 1x Battery Control Unit only. Capable of High-Powered Emergency-Backup and Off-Grid Functionality; Highest Efficiency Thanks to a Real High-Voltage Series Connection; The Patented Modular Plug Design Requires no Internal Wiring and Allows for Maximum Flexibility and

BYD B-Box Premium HV Battery Control Unit + Base

In addition, direct parallel connection of up to 3 identical Battery-Box Premium HVM allows a maximum capacity of 66.2 kWh. Ability to scale up by later adding HVM modules or parallel HVM stacks.



BYD B-Box Premium HVS/HVM Battery Control Unit

Das System kann durch Hinzufügen zusätzlicher HV-Module oder paralleler HV-Türme später erweitert werden. BYD Battery-Box Premium BCU+Base Einheit enthält den Sockel, die Abdeckung (BCU-Steuergerät) und die ...

BYD B-Box Premium HV Battery Control Unit + Base

In addition, direct parallel connection of up to 3 identical Battery-Box Premium HVM allows a



maximum capacity of 66.2 kWh. Ability to scale up by later adding HVM modules or parallel HVM stacks.



B-BOX PREMIUM HV BATTERY CONTROL UNIT + BASE

B-BOX PREMIUM HV BATTERY CONTROL UNIT + BASE: Anzahl pro Palette: 18:
Verpackungsmaterial: Kartonverpackung:
Palettenabmessungen LxBxH (mm): 1160x680x2150: Höhe (mm): 233: Länge (mm): 585: Breite (mm): 298: Gewicht (kg): 16,660:
Weiterführende Links Fragen zum Artikel? Unsere Experten helfen Ihnen weiter!



BYD BATTERY-BOX PREMIUM HVS/HVM BCU + Base

The BCU+Base is the battery control unit and base unit of the BYD B-BOX Premium HVM and HVS battery systems. The BCU is responsible for the management and control of the battery ...

12V 10AH



BYD B-Box Premium HVS/HVM BCU Battery Management ...

Highest Efficiency Thanks to a Real High-Voltage Series Connection; The Patented Modular Plug Design Requires no Internal Wiring and Allows for Maximum Flexibility and Ease of Use; Cobalt Free Lithium Iron Phosphate (LFP) Battery: Maximum Safety, Life Cycle, and Power; Compatible with Leading 1 and 3 Phase High Voltage Battery





Inverters

BYD B-Box Premium HV Battery Control Unit + Base

Eine Battery-Box Premium HV besteht aus 3 bis 8 HV Batteriemodulen, die in Reihe geschaltet sind, um eine Kapazität von 8,3 bis 22,1 kWh zu erreichen. Die direkte ...



BYD B-Box Premium HV Battery Control Unit + Base

Eine Battery-Box Premium HV besteht aus 3 bis 8 HV Batteriemodulen, die in Reihe geschaltet sind, um eine Kapazität von 8,3 bis 22,1 kWh zu erreichen. Die direkte Parallelschaltung von bis zu 3 identischen Battery-Box Premium HV ermöglicht zusätzlich eine maximale Leistung von 66,2 kWh.

BYD B-Box Premium HVS/HVM BCU Battery Management System

Highest Efficiency Thanks to a Real High-Voltage Series Connection; The Patented Modular Plug Design Requires no Internal Wiring and Allows for Maximum Flexibility and Ease of Use; ...



Battery-Box Premium HVM & HVS BCU + Base , SolarTraders

Highest Efficiency Thanks to a Real High-Voltage Series Connection; The Patented Modular Plug Design Requires no Internal Wiring and Allows for Maximum Flexibility and Ease of Use; ...



BYD BATTERY-BOX PREMIUM HVS/HVM BCU + Base

The BCU+Base is the battery control unit and base unit of the BYD B-BOX Premium HVM and HVS battery systems. The BCU is responsible for the management and control of the battery system, while the base unit serves as a base or "platform" for the secure connection and installation of individual battery modules.

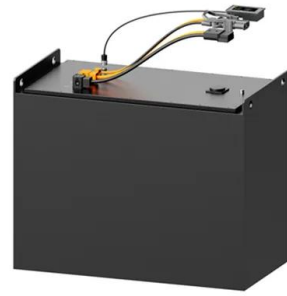


BYD B-Box Premium HVS/HVM Battery Control Unit + Base

Das System kann durch Hinzufügen zusätzlicher HV-Module oder paralleler HV-Türme später erweitert werden. BYD Battery-Box Premium BCU+Base Einheit enthält den Sockel, die Abdeckung (BCU-Steuergerät) und die Wandhalterung. Steuergerät passend für 2 bis 5 HVS Batteriemodule; Steuergerät passend für 3 bis 8 HVM Batteriemodule

Battery-Box Premium HVM & HVS BCU + Base (battery ...

BATTERY-BOX PREMIUM HVS & HVM BASE. This part contains 1x Battery Base with 1x Battery Control Unit only. Capable of High-Powered Emergency-Backup and Off-Grid Functionality; Highest Efficiency Thanks to a Real High ...



Battery-Box Premium HVM & HVS BCU + Base , SolarTraders

Highest Efficiency Thanks to a Real High-Voltage Series Connection; The Patented Modular Plug Design Requires no Internal Wiring and Allows for Maximum Flexibility and Ease of Use; Cobalt Free Lithium Iron Phosphate (LFP) Battery: Maximum Safety, Life Cycle, and Power; Compatible with Leading 1 and 3 Phase High Voltage Battery Inverters

Contact Us

For catalog requests, pricing, or partnerships, please visit:
<https://www.fundacja64.pl>