

Botswana wind turbine batteries





Botswana wind turbine batteries



Botswana

Botswana's current installed capacity of 890MW, is dominated by coal resources (99%) and the country is in the process of rebalancing the power mix by involving the private sector in building additional capacity in renewable energy sources.

Republic of Botswana Ministry of Minerals and Energy Botswana ...

wind energy resources in Botswana. The study includes the deployment of meteorological equipment for data collection (including wind-speed sensors and anemometers) to identify the resource topology



IRENA - International Renewable Energy Agency

for an inclusive transition to a clean energy future. Botswana has also issued an Integrated Resource Plan (IRP) for electricity generation over the next 20 years, covering renewable energy technologies such as solar photovoltaic, wind, concentrated solar thermal, and batteries for energy storage.

Renewables Readiness Assessment: Botswana

Description: Botswana has considerable unexploited renewable energy potential, especially as solar, wind and bioenergy and aims



to use these renewables to achieve economic energy security and independence. Botswana announced ...



Renewables Readiness Assessment: Botswana

Description: Botswana has considerable unexploited renewable energy potential, especially as solar, wind and bioenergy and aims to use these renewables to achieve economic energy security and independence. Botswana announced at the end of 2020 that renewable energy would account for at least 15% of the country's energy mix by 2030, with 50%

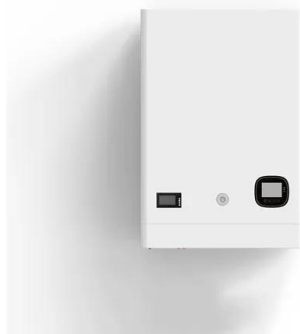
Botswana

Reasonable wind speeds exist in the country with the highest wind resources potential located in the Southwest, Central, and Eastern parts of the country with averaging wind speeds above 7 m/s, wind power density above 200W/ m² ...



Integrated Resource Plan for Electricity for Botswana

There is also wind potential. Regions with the highest wind potential are located in the South-West and Eastern parts of Botswana, with average wind speeds above 7 m/s, and a wind power density above 200 2W/m . Other energy resources include biogas and fuel wood. Petroleum products are imported. There is no

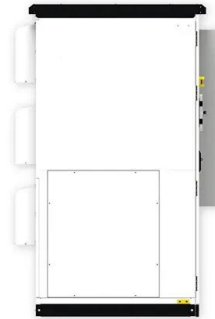




hydro power potential in Botswana.

ENERGY PROFILE Botswana

Onshore wind: Potential wind power density (W/m²) is shown in the seven classes used by NREL, measured at a height of 100m. The bar chart shows the distribution of the country's land area in each of these classes compared to the global distribution of wind resources. Areas in the third class or above are considered to be a good wind resource.

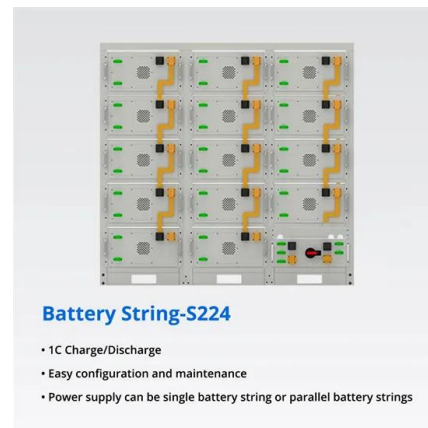


World Bank approves funding for Botswana's first grid-scale BESS

The project will finance grid investment and Botswana's first 50 MW utility-scale battery energy storage system (BESS) to support the integration of the first wave of renewable energy projects in the country.

Energy in Botswana

The International Renewable Energy Agency (IRENA) undertook an evaluation of the national energy sector in 2021 and found that Botswana could meet 15% of its energy needs in 2030 from its indigenous solar, wind, and bioenergy resources.



Renewables Readiness Assessment: Botswana

Botswana has considerable unexploited renewable energy potential, especially as solar, wind and bioenergy and aims to use these renewables to achieve economic energy security and independence. Botswana announced at the



LPW48V100H
48.0V or 51.2V



end of 2020 that renewable energy would account for at least 15% of the country's energy mix by 2030, with 50% renewable

Contact Us

For catalog requests, pricing, or partnerships, please visit:
<https://www.fundacja64.pl>