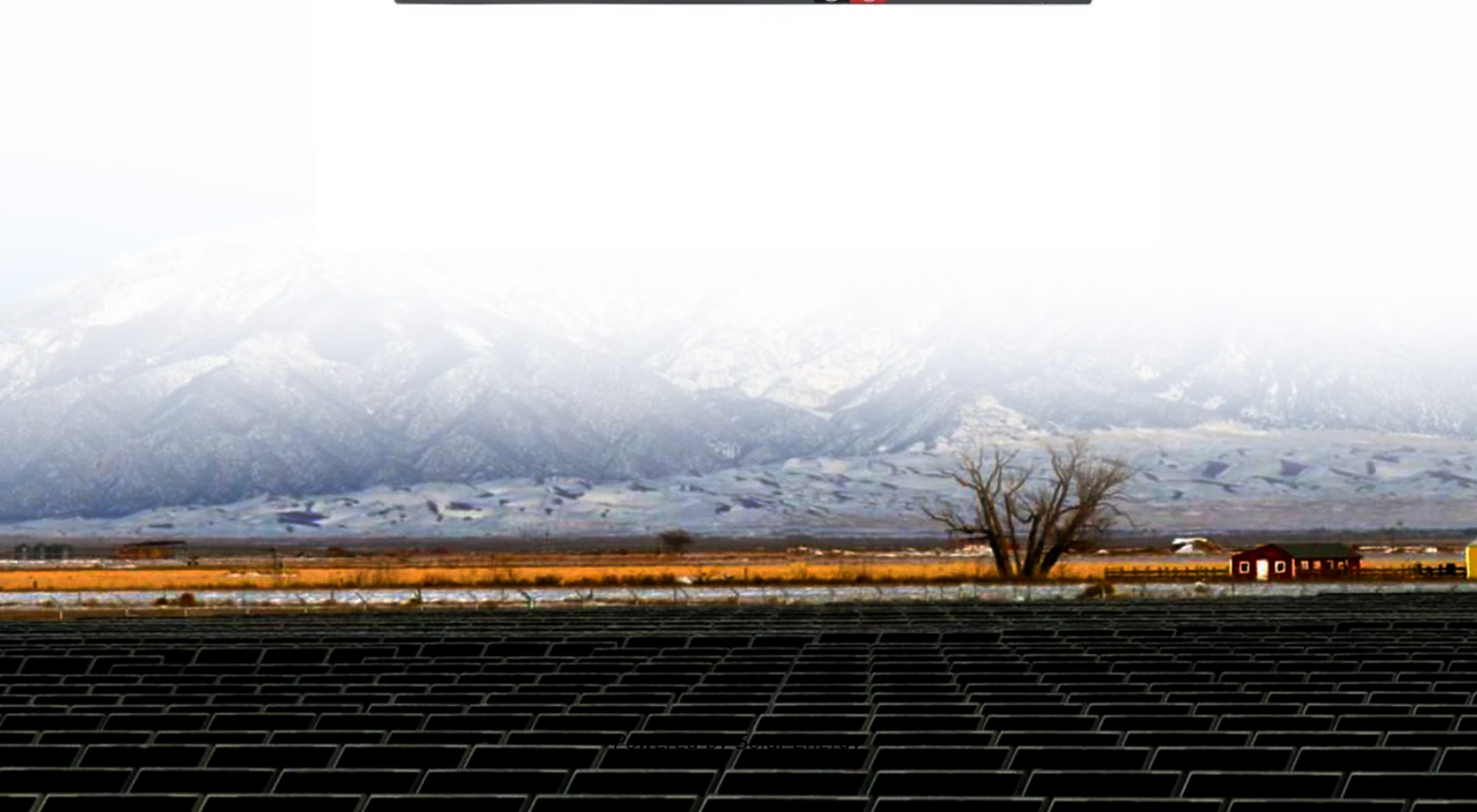


Bouvet Island grabat energy





Overview

Bouvet Island is an uninhabited volcanic island and dependency of . It is a protected nature reserve, and situated in the South at the southern end of the , it is the world's most island. Located north of the , Bouvet Island is not part of the southern region covered by the .



Bouvet Island grabat energy



Grabat Energy Company Profile

Grabat Energy is a company that manufactures and operates graphene polymer cells for the automotive and aeronautical sectors. It provides battery cells for the development of energy ...

OverviewHistoryNorvegia StationGeography and geologyClimateNaturePolitics and governmentSee also

Bouvet Island is an uninhabited subantarctic volcanic island and dependency of Norway. It is a protected nature reserve, and situated in the South Atlantic Ocean at the southern end of the Mid-Atlantic Ridge, it is the world's most remote island. Located north of the Antarctic Circle, Bouvet Island is not part of the southern region covered by the Antarctic Treaty System.



Bouvet Island: The Most Remote Island in the World

The northwestern part of Bouvet Island, known as Nyrøysa, is the only area where people can easily access the island. This region is mostly ice-free and hosts a weather station. Bouvet Island's northwestern section is also quite rugged, featuring gravel, lava stone, and boulders.

Climate secrets of the world's most



remote island

Welcome to Bouvet Island, a small volcanic rock in the South Atlantic. The Sub-Antarctic territory is thousands of kilometres from civilisation, and its high cliffs and ice-cap mean very few



Grabat Energy Company Profile

Grabat Energy is a company that manufactures and operates graphene polymer cells for the automotive and aeronautical sectors. It provides battery cells for the development of energy storage technologies.

Discover the Secrets of Earth's Most Isolated Spot ...

Bouvet Island stands as one of the most enigmatic and isolated locations on the planet. Situated deep in the South Atlantic Ocean, this icy outpost is wrapped in mystery, drawing the attention of those fascinated by ...



Climate secrets of the world's most remote island

Welcome to Bouvet Island, a small volcanic rock in the South Atlantic. The Sub-Antarctic territory is thousands of kilometres from civilisation, and its high cliffs and ice-cap mean very few



Bouvet Island: The Most Remote Island in the World

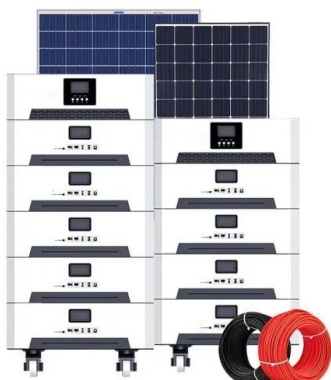
The northwestern part of Bouvet Island, known as Nyrøysa, is the only area where people can easily access the island. This region is mostly ice-free and hosts a weather station. Bouvet ...



Discover the Secrets of Earth's Most Isolated Spot Bouvet Island

Bouvet Island stands as one of the most enigmatic and isolated locations on the planet. Situated deep in the South Atlantic Ocean, this icy outpost is wrapped in mystery, drawing the attention of those fascinated by remote and unexplored territories.

(:Bouvetøya,:Bouvet Island),,,,? 8,6.4,58,945?



Grabat Energy

The company manufactures Graphene-polymer cells which can be further used to develop energy storage solutions for renewable energy and the electric mobility industry. The company expects to produce 80 million cells annually once its manufacturing plant is in place.



Bouvet Island

Bouvet Island (/ ' b u: v eɪ / BOO-vay; Norwegian: Bouvetøya [3] [bu'vè:oeY?]) [4] is an uninhabited subantarctic volcanic island and dependency of Norway is a protected nature reserve, and situated in the South Atlantic Ocean at the southern end of the Mid-Atlantic Ridge, it is the world's most remote island. Located north of the Antarctic Circle, Bouvet Island is not ...



Contact Us

For catalog requests, pricing, or partnerships, please visit:
<https://www.fundacja64.pl>