

Can closing the switch store energy repeatedly





Overview

When the switch is closed, energy discharges from the capacitor, while the inductor allows for continuous current flow during this transition. This flow minimizes interruptions and provides the necessary energy to sustain operations within the circuit. The switch stores energy primarily through capacitive and inductive mechanisms, ** 2. **The capacitor momentarily retains electrical charge, allowing it to manage voltage levels, ** 3. **Inductors store energy in magnetic fields, facilitating current flow regulation, ** 4. **Energy is then. After closing the switch, the charge redistributes between the two capacitors. I am trying to show that half of the initial energy stored in the capacitors is dissipated. The initial energy stored in the charged capacitor is: $E_{\text{initial}} = \frac{1}{2} C_1 V^2$ $E_{\text{initial}} = \frac{1}{2} C_1 V^2$ After the switch is. They'll always radiate a little bit of energy away as light since there's some interaction between the changing magnetic and electric field. But it's usually so small that you can't detect it unless you have the right instruments. Otherwise, if you're talking about capacitance changing, capacitance. How to store energy to close the swi n it back into electricity when needed. Electrical energy is a constant flow of he inductor maintains the same current. (But don't try to actually buil this circuit.) @Andyaka: So ss, bu other factor ome into play: 2. EMI 3. Rate limits 4. Safe operations. The magic lies in the energy storage principle of switches - a technology that's as fascinating as a squirrel storing nuts for winter. Let's break this down, layer by layer, with real-world examples and a dash of engineering humor. Imagine stretching a rubber band until it's ready to snap back. Spring energy storage of circuit breakers safely stores mechanical energy. This stored energy helps the circuit breaker operate quickly when needed. It acts like a backup, ready to engage during electrical problems. This allows the circuit breaker to stop harmful currents rapidly. [pdf] There is a.



Can closing the switch store energy repeatedly



Back emf when circuit is closed and opened and the conservation of energy

However, I am still unsure of how the magnetic and electric field "stores" energy. So when current is flowing normally, is a fraction of the energy used to generate a magnetic field? Unless ...

How to store energy to close the switch

Area 1 represents the energy that can be stored in both the direct and the designed charging cycles; area 3 represents the energy released through the switch; and the energy of area 2 is the part

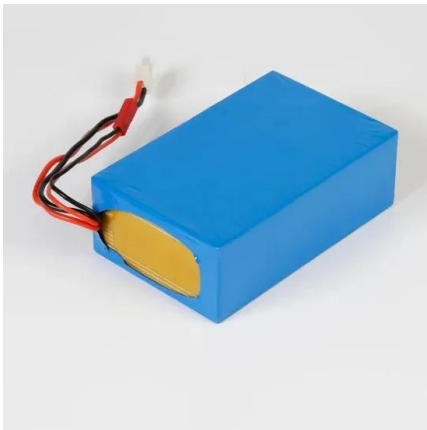


How does the energy storage switch store energy? , NenPower

Conversely, mechanical storage systems store energy in the form of kinetic energy or gravitational potential energy. Flywheels, for example, spin at high speeds to maintain energy, while ...

Energy loss in series capacitors after closing a switch

After closing the switch, the charge redistributes between the two capacitors. I am trying to show that half of the initial energy stored in the capacitors is dissipated.

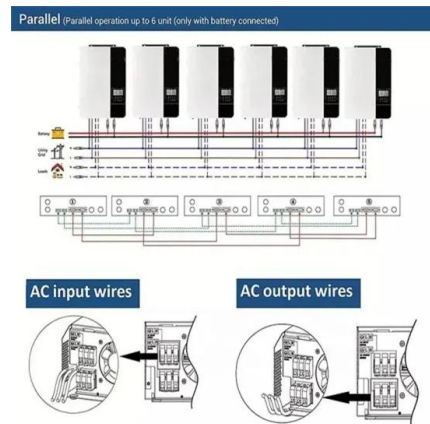


Why does the switch store energy? , NenPower

When a switch is activated, it not only facilitates the flow of electricity but also accumulates energy in various forms, enabling enhanced performance and stability over time.

Can the switch be opened and closed if it cannot store energy

ton switches can be normally open (a) or normally closed (b). The two basic switch mechanisms a closed for a long time, it is opened and switch 2 is closed. What is the current through the right ...



How does a switch store energy? , NenPower

They achieve this by accumulating charge between their plates, releasing energy as required within the circuit. In contrast, switches serve to control current flow rather than store energy. ...



Do capacitors automatically release their energy over ...

Will a capacitor automatically release its energy over time, or will it stay in there until manually discharged? So let's say I've had an old computer sitting around ...



Principle of Energy Storage Switch , Nader Circuit Breaker

Therefore, after turning off the energy storage switching power supply, the energy storage switching device will not be disconnected, but it will not store energy after it is turned off.



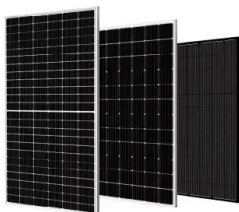
How many seconds does the switch store energy? , NenPower

While a switch itself does not store energy, several factors do influence how energy flows and is managed when a switch is in operation. The design of connected circuits, the overall capacity ...



When you flick a switch in an electronic circuit, where does the energy

They'll always radiate a little bit of energy away as light since there's some interaction between the changing magnetic and electric field. But it's usually so small that you can't detect it ...





Energy loss in series capacitors after closing a switch

After closing the switch, the charge redistributes between the two capacitors. I am trying to show that half of the initial energy stored in the capacitors is dissipated. The initial energy stored in ...



How does a high voltage switch store energy? , NenPower

A high voltage switch stores energy through several mechanisms, primarily involving 1. capacitor charging, 2. magnetic field storage, 3. inductive energy storag...

Does flipping a light on and off use more power than if it were left on

Overall you'll save energy flipping it on and off periodically. To prove it, buy a kill-a-watt and use that to measure the energy usage. You can get them at Walmart. Plug a bulb in and try it both ways for a ...



How Does Closing a Switch Affect Capacitors and Resistors in a ...

After the switch is closed and the system reaches steady state, current has ceased to flow. There is no potential drop across the resistor (no current) and the capacitors have the same potential ...



WHY DOES THE SWITCH STORE ENERGY AFTER CLOSING?

Store energy when the switch is closed When a switch triggers a circuit closure, the capacitor can momentarily provide energy, ensuring a smooth transition in operational states.



Does switching on and off a switch repeatedly consume more ...

Does switching on and off a switch repeatedly consume more electricity than leaving the electrical appliance on for the same duration of it being used? My mum used to tell me, dont keep switching ...

Energy Storage Principle of Switch: From Circuit Breakers to Power

The magic lies in the energy storage principle of switches - a technology that's as fascinating as a squirrel storing nuts for winter. Let's break this down, layer by layer, with real-world ...



When you flick a switch in an electronic circuit, where does the energy

When you flick a switch in an electronic circuit, where does the energy go? Title. Let's say that we have an electronic circuit with several capacitors, and we have a switch placed in a place were one state ...



How does the switch store energy so it can be closed?

When a switch triggers a circuit closure, the capacitor can momentarily provide energy, ensuring a smooth transition in operational states. When assessing how capacitors store energy, one ...



Where does the energy stored in inductor go on opening the switch?

6 The inductive energy is dissipated by producing a spark at the switch terminals. The core of the spark is a thread of very hot, ionized gas which produces light and noise with some of the ...

Contact Us

For catalog requests, pricing, or partnerships, please visit:
<https://www.fundacja64.pl>