

Dominica ess scheme





Dominica ess scheme



Employee Benefits in Dominica

Dominica has a contributory Social Security System. Both employers and employees contribute a percentage of the employee's salary towards Social Security. This system currently provides sickness, maternity, and injury benefits but does not offer a retirement pension yet.

Dominica Social Security Director: the more you contribute the ...

Director of the Dominica Social Security (DSS) Janice Jean-Jacques Thomas has announced that the company paid \$58.5 million to pensioners in 2022. She made the announcement during the 'Seniors on the Move' program aired on ...



Payment of Contributions - Dominica Social Security

Current Regulations provide that every employee in Dominica must contribute an amount of 6.5% of his gross income to the DSS. In addition to the amount deducted from the Employee, the employer is required to contribute an amount of 7.75% (in respect of Employees with Redundancy) or 7.50% (in respect of Employees without Redundancy) on behalf of

Employees - Dominica Social Security

Head Office Cnr. Hanover & Hillsborough St.,
Roseau Tel # +1 767 255 8311/2 WhatsApp #



+1 767 275 2600 Email: ,
 Sub Office Bay Street,
Portsmouth



- ✓ 50KW/100KWH
- ✓ HIGHER POWER OUTPUT IN OFF-GRID MODE
- ✓ CONVENIENT OPERATION & MAINTENANCE
- ✓ PRE-WIRED

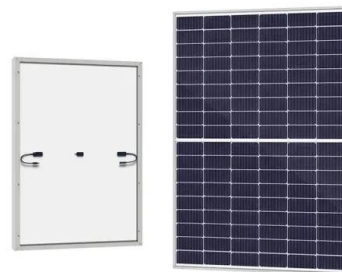


Employment Taxes in Dominica

In Dominica, employees are subject to two primary tax deductions from their salaries: Social Security Contributions and Pay As You Earn (PAYE) Income Tax. Social Security Contributions. The deduction rate for Social Security Contributions is 6.25% of the employee's gross earnings, capped at a monthly salary of XCD \$6,000.

Dominica Social Security - Contributions, Security Benefits, Pension

Welcome to Dominica Social Security Online This website is designed to help provide you with full knowledge of the more pertinent things you need to know about Social Security. Although we have tried to include as much information as possible, the information provided here is not exhaustive, hence it may be necessary to contact the Dominica



Employee Rights in Dominica , Rivermate

Employers in Dominica have a responsibility to uphold the country's anti-discrimination laws. This involves creating inclusive workspaces, ensuring fair hiring and promotion practices,



providing education and training on Dominica's anti-discrimination laws, and implementing clear and effective procedures for handling discrimination complaints

Obligations of Employers - Dominica Social Security

Every employer is required to deduct 6.5% of the wages paid to each employee, and to remit these contributions, along with his (the Employer's) Contribution to the Dominica Social Security on or before the 14th day following the month in respect of which it is due. E.g. Contributions in respect of the month of January should be paid no later



COMMONWEALTH OF DOMINICA

COMMONWEALTH OF DOMINICA STATUTORY RULES AND ORDERS NO. 29 OF 2015.
REGULATIONS Made by the Minister under section 26 of the Social Security Act, (Chap. 31:01). (Gazetted December 3, 2015.) 1. These Regulations may be cited as the - SOCIAL SECURITY (REGISTRATION OF EMPLOYEES AND EMPLOYERS) (AMENDMENT) REGULATIONS, ...

Contact Us

For catalog requests, pricing, or partnerships, please visit:
<https://www.fundacja64.pl>