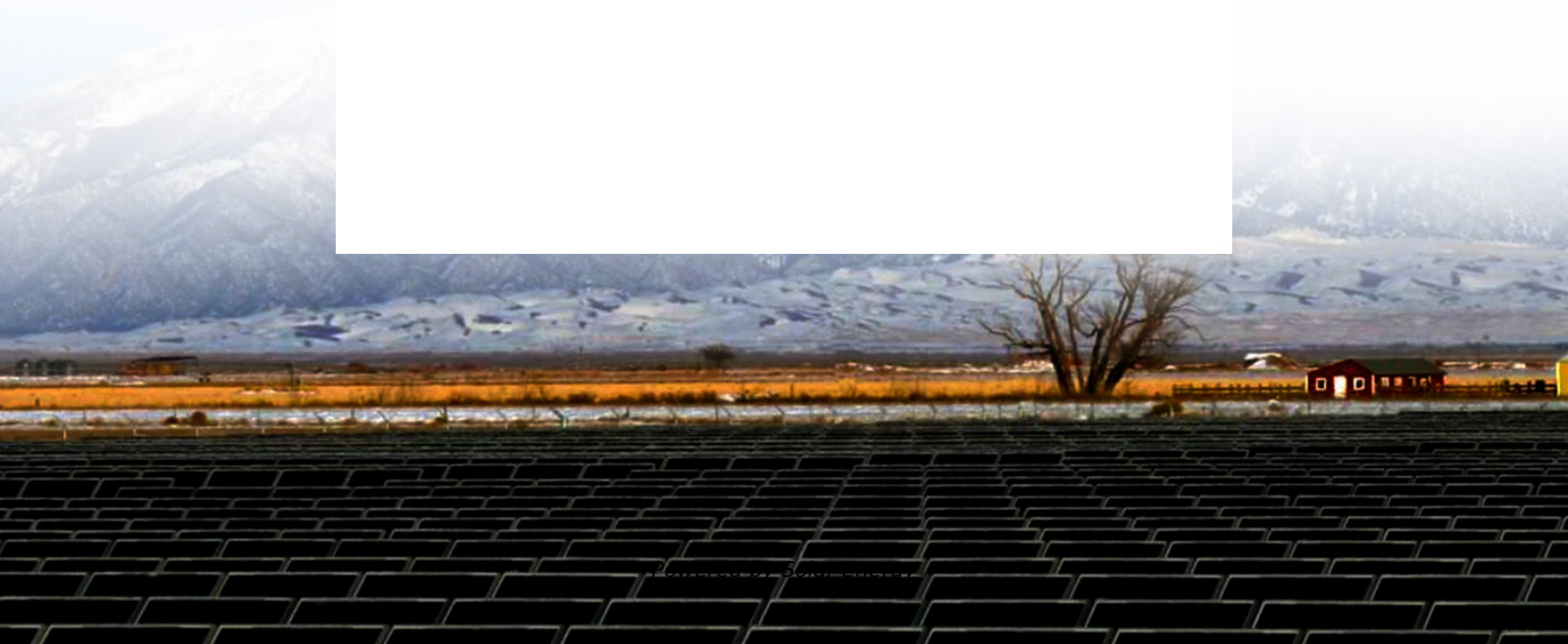
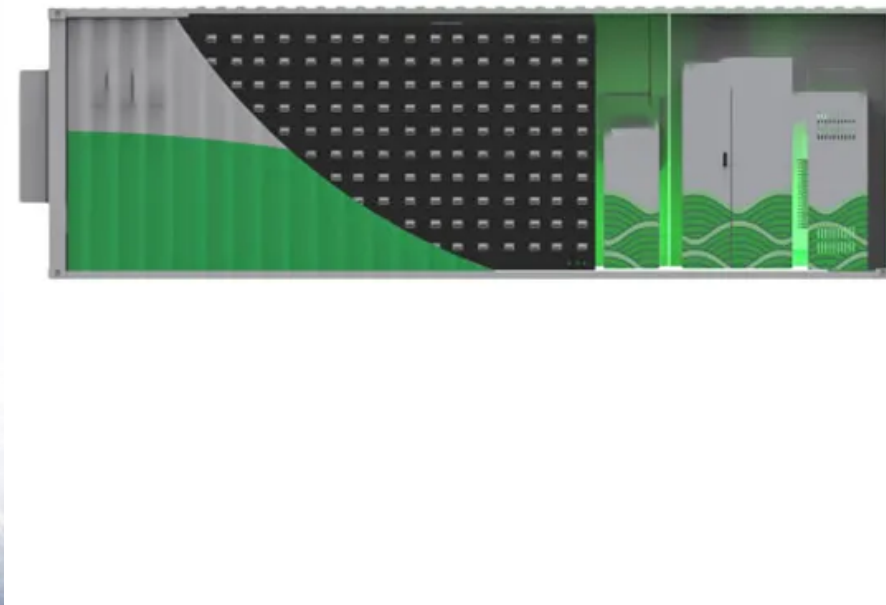


# **How long does it take for the solar container switch to be powered off before it needs to be recharged**





## Overview

---

To charge a solar light with an on/off switch, place the light in direct sunlight with the switch set to "OFF" for the first 1 to 2 days. This achieves a deep, optimal initial charge that conditions your battery. The inverter may run for a minute or two before the screen goes blank. Switch off the Battery Isolation Circuit Breaker and open the Battery fuse. The inverter is now switched off and all electricity supplies (DC and AC) and any loads, are removed. [pdf] 360 feet of solar panels can be rolled out. Technological advancements are dramatically improving solar storage container performance while reducing costs. [pdf] The inverter may run for a minute or two before the screen goes blank. Switch off the Battery Isolation Circuit Breaker and open the Battery fuse. The inverter is now switched off. When storing, not using, or preserving battery life, you can turn your solar light switch to OFF. If you aren't totally sure when your solar light switch should be on or off, or if you want some more specifics on solar lights, you're in the right place. We'll walk you through the basics of solar. Battery, controller, solar are never disconnected unless for service. Inverter is on as needed. Plugged in only if needed. If by "plug in RV" you are referring to shore power then I would do that last, not first. Get the whole system up before you plug in shore power. Then on disconnect you would. To charge a solar light with an on/off switch, place the light in direct sunlight with the switch set to "OFF" for the first 1 to 2 days. This achieves a deep, optimal initial charge that conditions your battery. Once fully charged, switch the light to "ON" and position it in an unobstructed sunny. Whether you're operating off-grid, offering disaster relief, or just looking for an all-around renewable energy option, mobile solar containers are hard to beat. These behemoths jam solar panels, inverters, batteries, and control systems into a shipping container that you can access anywhere. But.



## How long does it take for the solar container switch to be powered

---



### UNLOCKING OFF-GRID POWER: THE ULTIMATE GUIDE TO ...

Among the innovative solutions paving the way forward, solar energy containers stand out as a beacon of off-grid power excellence. In this comprehensive guide, we delve into the ...

### How to Set Up a Mobile Solar Container Effectively

Learn how to set up a mobile solar container efficiently--from site selection and panel alignment to battery checks and EMS configuration. Avoid common mistakes and get real-world ...

Warranty  
**10 years**

- LiFePO<sub>4</sub>
- Intelligent BMS
- Wide Temp: -20°C to 55°C



### UNLOCKING OFF-GRID POWER: THE ULTIMATE GUIDE TO SOLAR ...

Understanding Solar Energy Containers Solar energy containers encapsulate cutting-edge technology designed to capture and convert sunlight into usable electricity, particularly in ...

### Transforming a Shipping Container Into a DIY Solar Power Station!

Join us as we take you through the intricate details of transforming a 20-foot standard shipping container into a solar powerhouse capable of energizing an entire town.



### Utility-Scale ESS solutions



### Mechanism and Recharging , Seiko Watch Corporation

Mechanism and Recharging A solar watch is not recharged even though it was exposed to light. Is it broken? Sufficient strength of light and amount of time are ...

### How We POWER Our Off Grid Shipping Container Home

Our complete solar system is finally DONE! Lou goes through exactly how he built our off grid DIY power station to run everything we need in the shipping containers.



### How to Charge Solar Lights with On/Off Switch , Complete Guide

To charge a solar light with an on/off switch, place the light in direct sunlight with the switch set to "OFF" for the first 1 to 2 days. This achieves a deep, optimal initial charge that ...



## Solar Watch Batteries: Everything You Need to Know

A solar-powered watch needs to have a battery to store the electrical energy that has been converted from light by the solar cells. This battery can be either a rechargeable or non-rechargeable battery such as a lithium-ion, nickel metal hydride, or alkaline. Some manufacturers, like Citizen, claim their ...



## Off-Grid Solar Made SIMPLE: Container Home Power System Install

If you're looking for the simplest and easiest way to build a reliable, high quality off-grid solar system that can power a container or tiny house, you've c

## FREE Container Home Electrical Calculator 2025 -- Solar & Load

Calculate your shipping container home's electrical panel size, circuit breakers, inverter capacity, and solar panel requirements. NEC 2023 compliant for all 50 states.



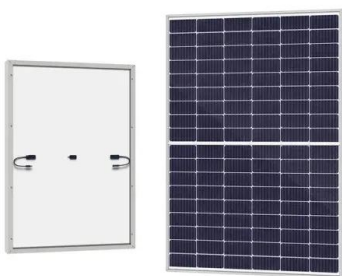
## Order of operations for turning on and off system?

Get the whole system up before you plug in shore power. Then on disconnect you would unplug shore power first, not last. Your posted order of operations looks good. I would consider ...



### How to Turn Off Solar Panels?

Understanding how to safely turn off your solar panels is crucial for maintenance, emergencies, and ensuring the longevity of your solar power system. Properly shutting down your ...



### How Long Do Solar Generators Last? , Best Generator

However, a powerful solar generator does not necessarily translate to a long run time because the run time also depends on the load. For example, a 500 watt solar generator can keep ...

### How long does it take to charge a container solar panel?

When containers are outfitted with multiple or larger solar panels, the power generation increases, shortening the time required to fully charge the connected batteries. One thing to consider ...



### AFGHANISTAN SOLAR POWERED CONTAINER

How long does it take for the solar container switch to be powered off before it needs to be recharged The inverter may run for a minute or two before the screen goes blank. Switch off the Battery ...



## What's the Runtime of Solar Powered Generators?

Are you considering adding a solar powered generator to your options for off-grid power? Solar generators are great emergency backup systems and can provide reliable, portable power ...



## Do You Charge Solar Lights When They're On or Off?

Most solar lights can be charged when they're on or off. However, they charge more effectively and quickly when they're turned off. It's a good idea to turn them off ...

## #22 Installing solar panels on a 20ft shipping container. OFF GRID

We got a 3KW system with a 10.5KW battery enough to power our (still) tiny household. Even in a few cloudy days. So now we are living off-grid in Central Por



## How Does Solar Work? , Department of Energy

Below, you can find resources and information on the basics of solar radiation, photovoltaic and concentrating solar-thermal power technologies, electrical grid systems integration, and the non ...



## Stealth Solar : How to Maintain Your Solar Calculator

For both partial and true-solar powered calculators, use a clean microfiber cloth to dust off the panels occasionally to keep them clean and working at their best. ...



- LiFePO<sub>4</sub>
- Wide temp: -20°C to 55°C
- Easy to expand
- Floor mount&wall mount
- Intelligent BMS
- Cycle Life:≥6000
- Warranty :10 years



## How I turned a shipping container into a solar off-grid ...

Between my electric bikes, e-motorcycles, e-ATVs, electric tractors, and a few other things I'm probably forgetting, having a weather-sealed, solar ...

## Should a Solar Light Switch Be On or Off?

Solar lights will still have an internal sensor that tells them when to charge their batteries and turn off the LED bulb. However, if you want your solar light to work at all, your switch needs to be ...



## Contact Us

---

For catalog requests, pricing, or partnerships, please visit:  
<https://www.fundacja64.pl>