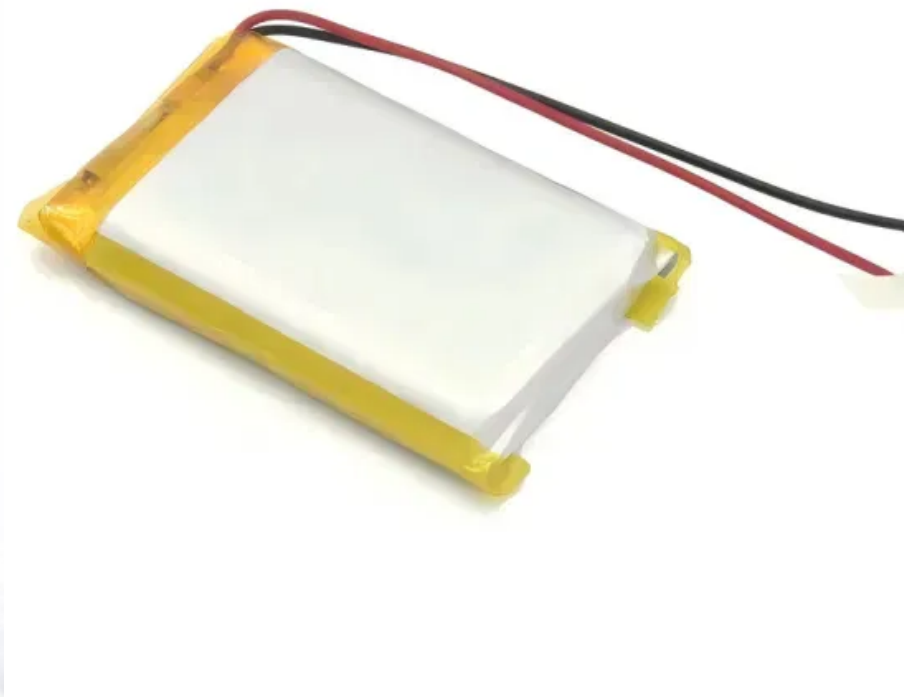


# How many volts does a lithium iron phosphate solar container battery pack have





## Overview

---

Individual LiFePO<sub>4</sub> (lithium iron phosphate) cells generally have a nominal voltage of 3.2V. These cells reach full charge at 3.65V and are considered fully discharged at 2.5V. Understanding the voltage levels is crucial for monitoring battery health and performance. The voltage of LiFePO<sub>4</sub> rechargeable batteries varies based on the State of Charge (SOC); as the battery charges or discharges, the voltage changes. Higher voltage in a LiFePO<sub>4</sub> battery indicates greater capacity and energy storage. To better understand LiFePO<sub>4</sub> battery voltage, here are some key. Renowned for stability, safety, and long cycle life, LiFePO<sub>4</sub> batteries offer a nominal voltage of 3.2 volts per cell. This differs from traditional lithium-ion batteries, which typically have a nominal value of around 3.6 to 3.7 volts per cell. The lower voltage range of LiFePO<sub>4</sub> batteries, combined. LiFePO<sub>4</sub> batteries offer exceptional value despite higher upfront costs: With 3,000-8,000+ cycle life compared to 300-500 cycles for lead-acid batteries, LiFePO<sub>4</sub> systems provide significantly lower total cost of ownership over their lifespan, often saving \$19,000+ over 20 years compared to. The voltage of Lithium-ion phosphate rechargeable batteries varies depending on the SOC. As the battery charges or discharges, the voltage increases. The higher the LiFePO<sub>4</sub> battery voltage, the more increased capacity and energy stored. Here are some basic definitions to enable you to understand. By being able to read the LiFePO<sub>4</sub> voltage chart, you can keep an eye on the battery's performance and make sure it operates safely. What is LiFePO<sub>4</sub> Battery Voltage One of the most widely used and secure batteries in solar systems is LiFePO<sub>4</sub>. They require little to no maintenance and have an. Here are lithium iron phosphate (LiFePO<sub>4</sub>) battery voltage charts showing state of charge based on voltage for 12V, 24V and 48V LiFePO<sub>4</sub> batteries — as well as 3.2V LiFePO<sub>4</sub> cells. Note: The numbers in these charts are all based on the open circuit voltage (Voc) of a single battery at rest. If your.



## How many volts does a lithium iron phosphate solar container batte



### 48V 105AH Golf Carts Battery Bluetooth,Lithium LiFePO4 Batteries

...

TCB WORTH 48V 105AH Golf Carts Lifepo4 Battery Bluetooth,200A BMS,Lithium Batteries with a Smart Monitor APP & 58.4V 20A Charger,51.2 Volt RV Trolling Motor Boat Marine Lifepo4 ...

### LiFePO4 Battery Voltage Chart

LiFePO4 battery voltage varies depending on charge level, temperature, and load conditions. Understanding its voltage chart is crucial for maintaining efficiency, safety, and longevity.

### 12.8V 100Ah



### HOW MANY STRINGS ARE THERE OF 72V LITHIUM BATTERY PACK

How much does the South Tarawa energy storage solar container lithium battery cost Does South Tarawa need solar power?Constrained renewable energy development and lack of private sector ...

### LiFePO4 battery (Expert guide on lithium iron phosphate)

Lithium Iron Phosphate (LiFePO4) batteries continue to dominate the battery storage arena in 2025 thanks to their high energy density, compact size, and long cycle life. You'll find



these ...



### Charging a Lithium Iron Phosphate (LiFePO4) Battery Guide

A Lithium Iron Phosphate (LiFePO4) battery is a type of rechargeable lithium-ion battery that utilizes lithium iron phosphate as its cathode material. Known for its stable chemical composition ...

### How to Choose the Best Solar Generator 5000 Watt Portable for Your ...

Learn what to look for in a solar generator 5000 watt portable--power output, battery type, portability, and more. Make an informed buying decision today.



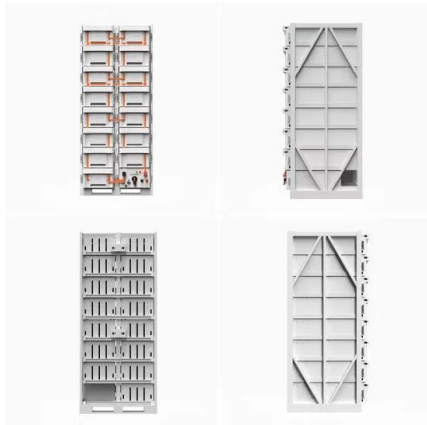
### LiFePO4 Battery Guide: Voltage Chart, Charging & Storage Tips

A LiFePO4 battery is a type of lithium-ion battery with a lithium iron phosphate cathode. Its rock-solid chemistry delivers a steady 3.2V per cell and a lifespan of 2,000-5,000 cycles.



## EU Warehouse Lithium Iron Phosphate Batteries 51.2V 100Ah 200Ah ...

Battery Technology: Lithium iron phosphate is preferred due to its safety and durability. Cycle Life and Warranty: The remaining capacity guaranteed during the warranty period (e.g., 15-year warranty, ...

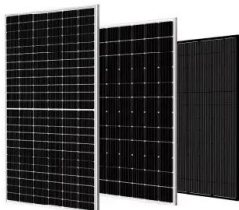


### How to charge lithium iron phosphate LiFePO4 battery?

When switching from a lead-acid battery to a lithium iron phosphate battery. Properly charge lithium battery is critical and directly impacts the performance ...

### Lithium iron phosphate square solar container battery

Let's explore the many reasons that lithium iron phosphate batteries are the future of solar energy storage. Battery Life. Lithium iron phosphate batteries have a lifecycle two to four times longer than ...



### LiFePO4 48V 200Ah Lithium Iron Phosphate Battery with 200A BMS Battery

LiFePO4 48V 200Ah Lithium Iron Phosphate Battery with 200A BMS Battery Life Over 8 Years, Suitable for Camping, Solar Power, Emergency Power etc.



## Traxxas Fans , Hey guys!!! I have a question , Facebook

Hey guys!!! I have a question. I store my LiPo batteries in a proper storage. And at the storage voltage using the charger. While I have yet to have a battery issue, what type of fire extinguisher do



## What Are LiFePO4 Batteries, and When Should You Choose Them?

How Are LiFePO4 Batteries Different? Strictly speaking, LiFePO4 batteries are also lithium-ion batteries. There are several different variations in lithium battery chemistries, and ...

## Understanding the Voltage of LiFePO4 Cells: A Comprehensive Guide

LiFePO4 cells operate within a specific voltage range to ensure optimal performance and longevity. The nominal voltage of a single LiFePO4 cell is approximately 3.2 volts. However, it's important to note ...

SUPPORT REAL-TIME ONLINE MONITORING OF SYSTEM STATUS



## 1MWH LITHIUM BATTERY STORAGE SYSTEM CONTAINER SOLAR ...

Each commercial and industrial battery energy storage system includes Lithium Iron Phosphate (LiFePO4) battery packs connected in high voltage DC configurations. [pdf] [FAQS about Solar ...



## LiFePO4 Battery Voltage Charts (12V, 24V & 48V)

12V 100Ah LiFePO4 batteries are currently some of the most popular for off-grid solar power systems. They're a drop-in replacement for 12V lead acid batteries, and a great upgrade. They ...



## Lithium Iron Phosphate Accumulator: Best Picks

Find top lithium iron phosphate accumulators with 6000+ cycles, built-in BMS, and fast charge support. Compare verified suppliers, MOQ < 5, and customize power & voltage. Click to ...

## Lithium iron phosphate (LFP) batteries in EV cars: Everything you ...

What are the drawbacks of lithium iron phosphate batteries? While LFP batteries have several advantages over other EV battery types, they aren't perfect for all applications. Here are ...



## Everything You Need to Know About LiFePO4 Battery Cells: A

Discover the benefits, applications, and best practices of LiFePO4 battery cells. Learn how they power everything from EVs to renewable energy systems.



## HOW MANY 72V LITHIUM BATTERY PACKS DO YOU NEED A

Each commercial and industrial battery energy storage system includes Lithium Iron Phosphate (LiFePO4) battery packs connected in high voltage DC configurations. [pdf] [FAQS about Solar ...



## The Comprehensive Guide to LiFePO4 Voltage Chart

Individual LiFePO4 (lithium iron phosphate) cells generally have a nominal voltage of 3.2V. These cells reach full charge at 3.65V and are considered fully discharged at 2.5V. Understanding the voltage ...

## Ultimate Guide to LiFePO4 Voltage Chart

A 12-volt LiFePO4 battery has a bulk voltage of 14.6 volts. Float voltage: After the battery is fully charged, it is kept at a voltage that is typically lower than bulk voltage.



## Best Portable Generators For Car Battery [Updated On

Many folks assume a portable power station like the VTOMAN Jump 600X is just a fancy battery pack, but it actually packs a serious punch with its built-in car jump starter. I remember pulling ...



## Guide to LiFePO4 Voltage Chart

Renowned for stability, safety, and long cycle life, LiFePO4 batteries offer a nominal voltage of 3.2 volts per cell. This differs from traditional lithium-ion batteries, which typically have a ...



## A Comprehensive LiFePO4 Voltage Chart Guide for Off-Grid Systems

Every lithium iron phosphate battery has a nominal voltage of 3.2V, with a charging voltage of 3.65V. The discharge cut-down voltage of LiFePO4 cells is 2.0V. Here is a 3.2V battery voltage chart. ...

## Contact Us

---

For catalog requests, pricing, or partnerships, please visit:  
<https://www.fundacja64.pl>