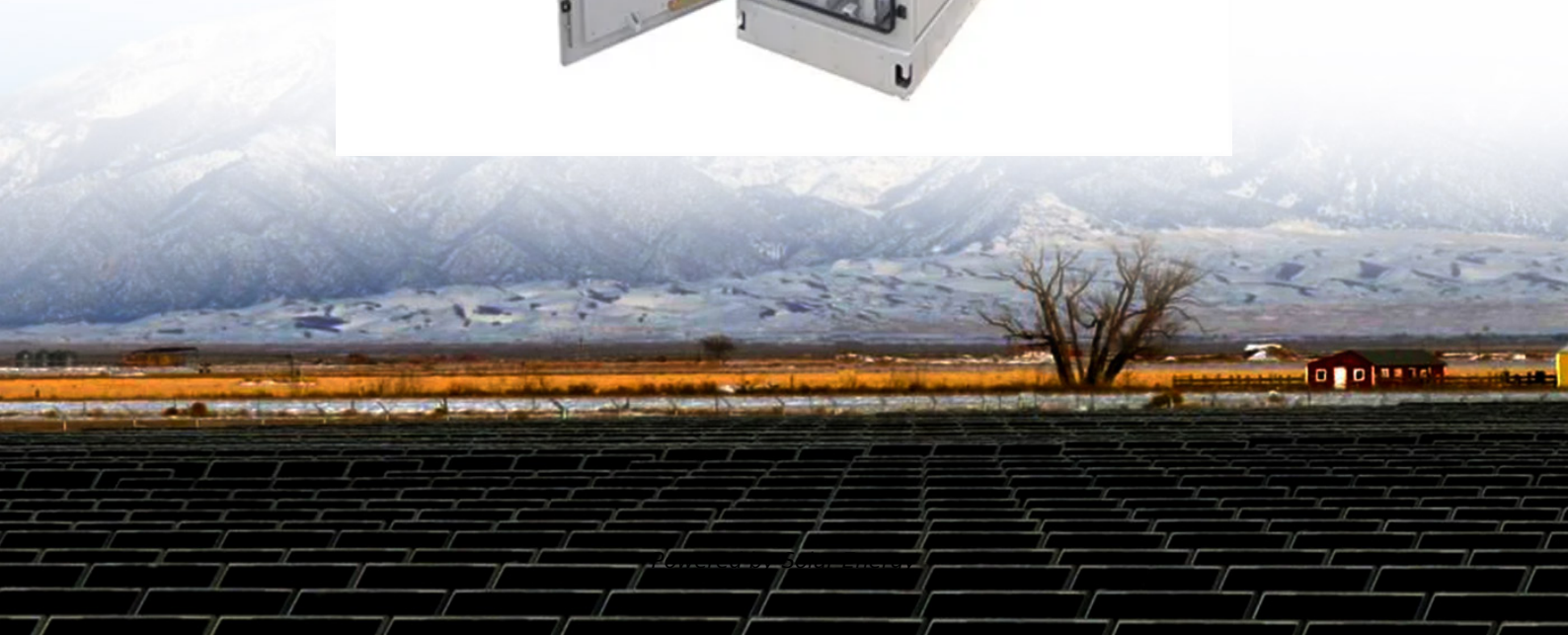


How to measure the battery power of new equipment outdoors





Overview

Core tools include digital multimeters (voltage/resistance), hydrometers (electrolyte density), and load testers (capacity). Advanced setups use impedance spectrometers for internal resistance. Always prioritize safety gear—insulated gloves and goggles—when handling live terminals. Summary: Measuring outdoor power supply capacity ensures reliable energy access for off-grid systems, renewable projects, and remote operations. This guide covers methods, tools, and real-world applications to help you optimize performance and avoid downtime. Imagine planning a solar farm in a. A fundamental skill for anyone dealing with batteries is knowing how to measure their voltage, current, and resistance using a multimeter. This seemingly simple tool provides invaluable insights into a battery's health and performance, allowing us to diagnose problems, troubleshoot issues, and make. This post demonstrates the procedure to test the capacity of a battery. The test will determine and compare the battery's real capacity to its rated capacity. A load bank, voltmeters, and an amp meter will be utilized to discharge the battery at a specific current till a minimum voltage is. However, once you have connected your battery to a circuit, you can determine power output by measuring the voltage drop across the load of the circuit. If you are familiar with the equations that relate power to voltage, current and resistance, you will be able to navigate between these concepts. Checking battery capacity with a multimeter allows you to assess its state of charge and health accurately. By measuring voltage, current, and load response, you can estimate capacity. Redway Power emphasizes using proper techniques and multimeter settings to prevent misreading and ensure precise. Testing a battery's capacity is one of the best ways to determine the health of a battery cell. indicator of a battery. To test the capacity of a battery cell, you have to fully charge and fully discharge the cell while precisely measuring the energy in at least one direction. Also, being able to.



How to measure the battery power of new equipment outdoors



How to Measure the Degree of Outdoor Power Supply: A ...

Summary: Measuring outdoor power supply capacity ensures reliable energy access for off-grid systems, renewable projects, and remote operations. This guide covers methods, tools, and real ...

Bluetooth Smart Battery Monitor - Amped Outdoors

This is not required with new Amped Outdoors Bluetooth batteries. The Smart Battery Monitor is a high-precision meter that allows you to check the status of ...



Step-by-Step Battery Capacity Testing Procedure

With our step-by-step procedure, you'll learn how to precisely evaluate battery capacity. Discover key tools, techniques, & best practices for achieving consistent results and optimizing ...

How to Measure Battery with Multimeter? A Step-by-Step Guide

Improper battery handling or a lack of understanding of their condition can lead to decreased performance, equipment damage, or even dangerous situations like explosions or



fires. ...

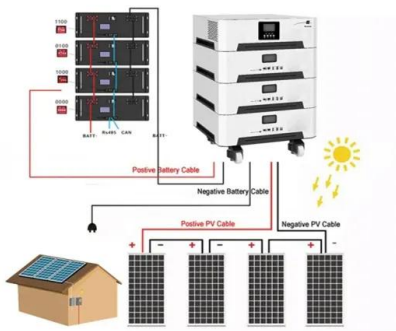


How to Accurately Measure Battery Voltage and Capacity?

What equipment is needed for measuring battery voltage and capacity? You'll need a multimeter for voltage measurement and a constant current load (e.g., resistor or battery tester) for ...

Getting the most from your battery-powered outdoor ...

Here are some things to keep in mind to keep your equipment in great shape. Replacing the battery The lifespan of a battery is measured in terms of charge ...



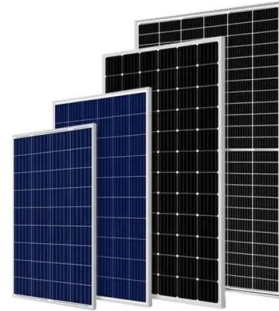
Best Battery Outdoor Power Equipment [Updated On: January 2026]

Battery outdoor power equipment consists of tools and machinery powered by rechargeable batteries for outdoor tasks. This category includes devices such as lawn mowers, leaf ...



Protect Your Power: Battery Basics

Protect Your Power: Battery Basics Battery Basics for Outdoor Power Equipment The Outdoor Power Equipment Institute is the advocacy voice for the OPE industry, and is an ANSI-recognized Standard ...



How To Measure The Power Output From A Battery

In order to measure the power output of the battery, you must measure it when it is connected to an external resistance, also called a load resistance. Otherwise, the battery is doing no ...

Measuring Batteries Capacity and Battery Health Test

Once the battery is fully charged first, a load is placed on the battery and then the voltage and current of the battery is measured. The energy coming out of the battery is counted and added ...



How to calculate total amp draw! - Amped Outdoors

We are often asked what battery do you I need to run all of my electronics We have a nice guide on our main page showing operating times of batteries with most ...



How to Check Battery Capacity with a Multimeter?

To measure accurately, fully charge the battery, disconnect it from all loads, and allow it to rest for several hours to stabilize voltage. Clean terminals and ensure the multimeter is correctly ...



The best battery packs and power stations for use in the outdoors

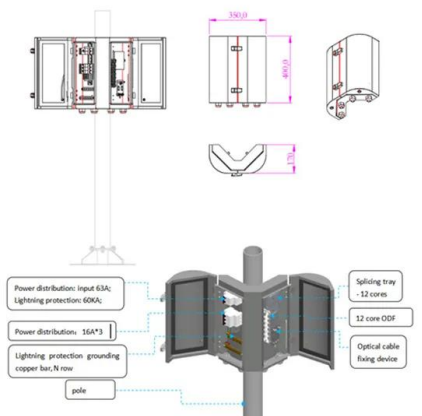
Rugged, dependable, and packing plenty of power, these are our picks for the absolute best battery packs and portable power stations for use in the outdoors. Battery packs

How Do You Correctly Measure Your Battery?

Correct battery measurement involves using tools like a multimeter to check voltage, a hydrometer for lead-acid electrolytes, and capacity testers. Key metrics include voltage (12.6V=full ...

Commercial and Industrial ESS Air Cooling / Liquid Cooling

- Budget Friendly Solution
- Renewable Energy Integration
- Modular Design for Flexible Expansion



How to calculate total amp draw!

We have a nice guide on our main page showing operating times of batteries with most graphs on the market today including how much power they draw. We have included it below on this page for ...



How To Measure The Power Output From A Battery

Batteries output power when they are connected to a circuit. A battery that is not connected to a circuit provides no current and therefore outputs no power. However, once you have ...



Tomahawk Power 30 in. Battery-Powered Push Sweeper with Triple Power

Versatile and convenient this power sweeper can be used indoors and outdoors on wet or dry surfaces. With the all-new automatic dust suppression system, achieve cleaner results while cutting down ...

Contact Us

For catalog requests, pricing, or partnerships, please visit:
<https://www.fundacja64.pl>