

# Intilion scalestac Brazil





## Intilion scalestac Brazil

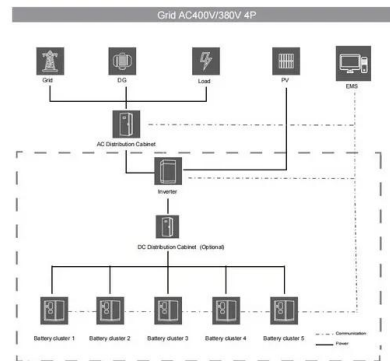
### Product Sheet INTILION , scalestac



INTILION , FLEPS available to maximize fire safety Fully comprehensive energy management system for monitoring all installed installed systems and reliable remote maintenance service

#### INTILION scalestac 100 kW, 154 kWh - Solar Logic

INTILION scalestac 100 kW power and 154 kWh gross capacity. The scalestac concept derives from the large-scale storage sector and offers maximum flexibility and scalability. Scalestac is ...



#### INTILION scalestac 25 kW, 154 kWh , 6481

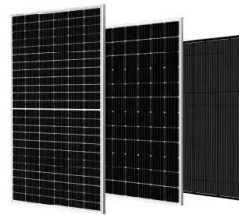
INTILION scalestac 25 kW power and 154 kWh gross capacity. The scalestac concept derives from the large-scale storage sector and offers maximum flexibility and scalability. Scalestac is available from 25 kVA to 400 kVA and with a gross capacity between 154 kWh and up to approx. 1 MWh. Larger storage units are manufactured on a project-specific

#### INTILION scalestac 25 kW, 154 kWh , 6481

INTILION scalestac 25 kW power and 154 kWh gross capacity. The scalestac concept derives



from the large-scale storage sector and offers maximum flexibility and scalability. Scalestac is ...



### INTILION , scalestac

INTILION , scalestac power Technical data Energy (kWh) / Power (kVA) 1 154 kWh 2 308 kWh 3 462 kWh 4 616 kWh 25 kVA 0,16 C 0,08 C 0,05 C 0,04 C 50 kVA 0,32 C 0,16 C 0,11 C 0,08 C 75 kVA 0,49 C 0,24 C 0,16 C 0,12 C 100 kVA 0,65 C 0,32 C 0,22 C 0,16 C 125 kVA 0,81 C 0,41 C 0,27 C 0,20 C 150 kVA 0,97 C 0,49 C 0,32 C 0,24 C

### INTILION scalestac 154 KWH / 75 KVA - MAXSEL Energy Solutions

INTILION scalestac 154 KWH / 75 KVA. Als Gegenstück zum Outdoor-freudigen Intilion Scalebloc bleibt sein großer Bruder, der Scalestac, lieber Indoor. Dafür ist er das passende Kaliber für große Anwendungen. Mit Wechselrichtereinheiten à 25 kVA lassen sich bis zu 400 kVA Ausgangsleistung pro System zusammenstellen.



### INTILION , scalestac

INTILION , scalestac Technical data Energy (kWh) / Power (kVA) 1 154 kWh 2 308 kWh 3 462 kWh 4 616 kWh 25 kVA 0.16 C 0.08 C 0.05 C 0.04 C 50 kVA 0.32 C 0.16 C 0.11 C 0.08 C 75 kVA 0.49 C 0.24 C 0.16 C 0.12 C 100 kVA 0.65 C 0.32 C 0.22 C 0.16 C 125 kVA 0.81 C 0.41 C 0.27 C 0.20 C 150 kVA 0.97 C 0.49 C 0.32 C 0.24 C



### **INTILION SCALESTAC POWER ASSEMBLY MANUAL Pdf Download**

INTILION , scalestac is an AC-coupled battery storage system and in grid-building operation, it is primarily suitable for the "behind-the-meter" application. There are three important features

...



### **INTILION SCALESTAC POWER ASSEMBLY MANUAL Pdf Download**

INTILION , scalestac is an AC-coupled battery storage system and in grid-building operation, it is primarily suitable for the "behind-the-meter" application. There are three important features that are worth mentioning for the behind-the-meter field of application: The system interacts with the energy meter at the operating company's mains



### **INTILION scalestac 100 kW, 154 kWh - Solar Logic**

INTILION scalestac 100 kW power and 154 kWh gross capacity. The scalestac concept derives from the large-scale storage sector and offers maximum flexibility and scalability. Scalestac is available from 25 kVA to 400 kVA and with a gross capacity between 154 kWh and up to approx. 1 MWh. Larger storage units are





manufactured on a project-specific



### INTILION scalestac 154 KWH / 75 KVA - MAXSEL Energy Solutions

INTILION scalestac 154 KWH / 75 KVA. Als Gegenstück zum Outdoor-freudigen Intilion Scalebloc bleibt sein großer Bruder, der Scalestac, lieber Indoor. Dafür ist er das passende Kaliber für ...

### Technical Data Sheet INTILION , scalestac

INTILION , scalestac Secure. Scalable. Economical. An overview of all highlights Modular and flexibly expandable battery storage system at the power and capacity level First standardised ...



### INTILION , scalestac

INTILION b r insteden-Straße 5 wicau cntactintilin.c intilin 3 INTLION , scalestac power (bis 1C) 1 154 kWh 2 308 kWh 3 462 kWh 4 616 kWh 5 770 kWh 6 924 kWh 25 kVA 50 kVA 75 kVA 100 kVA 125 kVA 150 kVA

### Technical Data Sheet INTILION , scalestac

INTILION , scalestac Secure. Scalable. Economical. An overview of all highlights Modular and flexibly expandable battery storage system at the power and capacity level First standardised system with charge/discharge performance up to 2C Plug & Play, all-in-one, AC-coupled solution 123/154 kWh nominal energy capacity



## Contact Us

---

For catalog requests, pricing, or partnerships, please visit:  
<https://www.fundacja64.pl>