

# Lesotho t bat h 5 8





## Lesotho t bat h 5 8



### SolaX T-BAT H 5.8kWh Master Battery

SolaX T-BAT H 5.8kWh Master Battery; SolaX T-BAT H 5.8kWh Master Battery. 5.8kWh, Master BMS (10yr warranty) Key Features. Nominal Voltage: 115.2 V; Operating Voltage Range: 100-131 V; Battery Type: Li-ion (LFP) Total ...

### T-BAT-SYS-HV-5.8 ,

t-bat-sys-hv-5.8 ? ,? ,90%,6000?



### Solax T-BAT H 5.8 V2

T-BAT SYS-HV V2 is one of the advanced energy storage systems available on the market today, featuring cutting-edge technology, high reliability and convenient control functions. Designed and manufactured in partnership with SolaX, Triple Power offers a 5.8 kWh model that can be installed in series with up to 4 batteries, allowing for 23 kWh of

### SolaX T-BAT-SYS-HV-5.8(T58) Datasheet-En-V2.9.1

T-BAT H 5.8 V2 T-BAT H 11.5 V2 T-BAT H 17.3 V2  
T-BAT H 23 V2 T-BAT H 5.8 T-BAT H 11.5 T-BAT H  
17.3 T-BAT H 23 (1) Test conditions: 90% DOD,



0.2C charger & discharger @+25°C \* ...



### Solax T-BAT H 5.8 master pack V2

SKU: T-BAT H 5.8 Categories: Home Battery, Type Attention! Installation only by a certified installer in accordance with the regulations and standards of the respective country or region



### SolaX T-BAT H 5.8kWh Master Battery

SolaX T-BAT H 5.8kWh Master Battery; SolaX T-BAT H 5.8kWh Master Battery. 5.8kWh, Master BMS (10yr warranty) Key Features. Nominal Voltage: 115.2 V; Operating Voltage Range: 100-131 V; Battery Type: Li-ion (LFP) Total Capacity: 5.8 kWh; ...



### SolaX T-BAT-SYS-HV-5.8 , LiFePO4 Battery For Solar System

The T-BAT-SYS-HV-5.8 LiFePO4 solar battery offers 90% DOD, 6000+ cycle life, and IP65 protection. Ideal for floor or wall mounting, it ensures reduced self-consumption, quick installation, and eco-friendliness with no toxic materials.





## T-BAT H 5.8 MASTER PACK V2.1

When connecting the SolaX T-BAT H 5.8 Battery, make sure to observe the voltage range of the inverter. Therefore, for X-1 hybrid devices, at least 1 Master battery and a maximum of 2 Slave batteries must be connected.

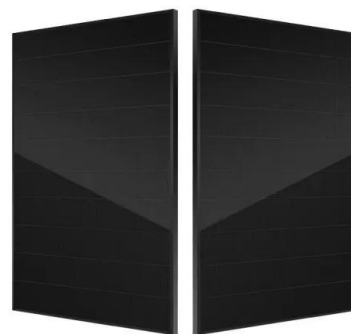


## SolaX T-BAT-SYS-HV-5.8(T58) Datasheet-En-V2.9.1

T-BAT H 5.8 V2 T-BAT H 11.5 V2 T-BAT H 17.3 V2  
T-BAT H 23 V2 T-BAT H 5.8 T-BAT H 11.5 T-BAT H  
17.3 T-BAT H 23 (1) Test conditions: 90% DOD,  
0.2C charger & discharger @+25°C \* X3 Hybrid  
inverter can connect 2-4pcs of T58 batteries (1pc  
of T58 master, and rest 1 ...

## T-BAT H 5.8 (Master)

T-BAT SYS-HV Configuration List \* X3 Hybrid inverter can connect 2-4pcs of T58 batteries(1pc of T58 master, and rest 1-3pcs of T58 slave). \* X1 Hybrid inverter can connect 1-3pcs of T58 batteries(1pc of T58 master, without T58 slave, or with 1-2pcs of T58 slave).



## T-BAT H 5.8 MASTER PACK V2.1

When connecting the SolaX T-BAT H 5.8 Battery, make sure to observe the voltage range of the inverter. Therefore, for X-1 hybrid devices, at least 1 Master battery and a maximum of 2 Slave ...



## Solax T-BAT H 5.8 V2

T-BAT SYS-HV V2 is one of the advanced energy storage systems available on the market today, featuring cutting-edge technology, high reliability and convenient control functions. Designed and manufactured in partnership with ...



## SolaX T-BAT-SYS-HV-5.8 , LiFePO4 Battery For Solar System

The T-BAT-SYS-HV-5.8 LiFePO4 solar battery offers 90% DOD, 6000+ cycle life, and IP65 protection. Ideal for floor or wall mounting, it ensures reduced self-consumption, ...

## Contact Us

---

For catalog requests, pricing, or partnerships, please visit:  
<https://www.fundacja64.pl>