

Mauritania calala bess





Mauritania calala bess

Calala Battery Energy Storage System



The Calala Battery Energy Storage System is a 300 megawatt, 600 megawatt hour storage project proposed by Equis Energy, to be located approximately six kilometres south-east of Tamworth, NSW. Alongside the battery, the project will include a connection to Tamworth Substation via underground transmission lines and ancillary works.

Phase 1

the development of the Calala BESS in Calala, Tamworth NSW. The proposed site for the Calala BESS project is 474 Calala Lane, Calala, Lot 17 DP 629969, located within Tamworth Regional LGA, New South Wales (NSW). The total site area is approximately 36 hectares, however the footprint of the proposed facility will cover a total area of 8.9 hectares.



Scoping Report Calala Battery Energy Storage System

stand-alone 300 megawatt (MW)-1200MW-hour battery energy storage system (BESS) at 57 Burgess Lane, Calala NSW (Lot 17 DP 629969) (the Project). The Project will be able to ...



10+ Countries Join First-of-Its-Kind Consortium to ...



Through the BESS Consortium, these first-mover countries are part of a collaborative effort to secure 5 gigawatts (GW) of BESS commitments by the end of 2024. In order to achieve the estimated 400 GW of renewable ...



Battery Energy Storage System (BESS)

What benefits will the Calala BESS offer? The proposed Calala BESS can deliver affordable, and reliable electricity to communities while helping to meet New South Wales' future electricity needs. It can provide economic, social, and environmental benefits, including: o Storing up to ...

Calala BESS Project Overview FAQ Ba

BESS can deliver affordable, clean, and reliable electricity to the Australian communities where we operate by allowing more solar and wind energy into the grid to help reduce volatility and ...



Battery Energy Storage System (BESS)

Our Calala BESS will make some noise when charging and discharging. This noise sounds like an air conditioning unit and comes from the battery's cooling fans which regulate its temperature. We will comply with the New South Wales Government noise regulations during the construction and operations of our BESS by:





Scoping Report Calala Battery Energy Storage System

stand-alone 300 megawatt (MW)-1200MW-hour battery energy storage system (BESS) at 57 Burgess Lane, Calala NSW (Lot 17 DP 629969) (the Project). The Project will be able to support and firm the NSW grid system by supplying electricity to homes and businesses during peak times of electricity demand. The project has an



Calala

The proposed Calala Battery Energy Storage System (BESS) is located approximately 5.8km southeast of the Tamworth CBD within the Tamworth regional municipality. The BESS has a charge/discharge capacity of up to ...

Calala Battery Energy Storage System, Calala (SSD 52786213)

The Calala BESS project will include: o The construction and operation of a BESS with an estimated capacity of up to 300 Megawatts (MW) / 1200 Megawatt hours (MWh). o Associated infrastructure, including underground grid connection to the Tamworth 330kV substation.



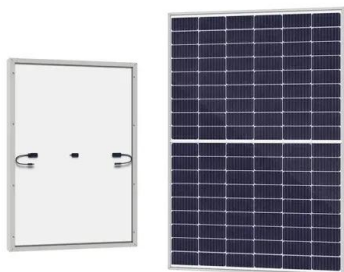
Battery Energy Storage System (BESS)

What benefits will the Calala BESS offer? The proposed Calala BESS can deliver affordable, and reliable electricity to communities while helping to meet New South Wales' future electricity ...



Calala Battery Energy Storage System, Calala (SSD 52786213)

The Calala BESS project will include: o The construction and operation of a BESS with an estimated capacity of up to 300 Megawatts (MW) / 1200 Megawatt hours (MWh). o Associated ...



Calala BESS Project Overview FAQ Ba

BESS can deliver affordable, clean, and reliable electricity to the Australian communities where we operate by allowing more solar and wind energy into the grid to help reduce volatility and lower electricity prices. Our Calala BESS can help meet NSW's future electricity needs while providing economic, social,

Contact Us

For catalog requests, pricing, or partnerships, please visit:
<https://www.fundacja64.pl>