

Niue solar system rate in





Overview

Niue is a 261.46 km (100.95 sq mi) in the southern Pacific Ocean, east of Tonga. There are three outlying within the , with no land area: 1. , 240 km (150 mi) southeast, submerged drying during low tide, 9.5 km (5.9 mi) north-south, 7.5 km (4.7 mi) East-West, total area 56 km.



Niue solar system rate in



Niue Seeking More Solar Power

Under the new energy roadmap, Niue has set a goal of 80% renewables by 2025. According to Radio New Zealand, while the main focus of Niue's energy transition will be on solar power; the potential of other renewables such as wind power, biomass and wave energy will be investigated.

Niue

Overview Geography History Government and politics Economy Demographics Culture See also

Niue is a 261.46 km (100.95 sq mi) raised coral atoll in the southern Pacific Ocean, east of Tonga. There are three outlying coral reefs within the exclusive economic zone, with no land area:

1. Beveridge Reef, 240 km (150 mi) southeast, submerged atoll drying during low tide, 9.5 km (5.9 mi) north-south, 7.5 km (4.7 mi) East-West, total area 56 km ...



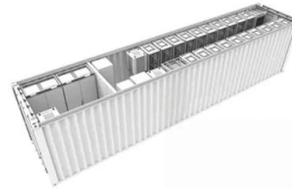
Renewable Energy bringing positive change to the lives of people in Niue

PIGGAREP in Niue PIGGAREP has implemented one project on the island of Niue: Dynamic Stability Study of the NPC Grid amount of renewables (Solar PV) that can be integrated into the system. Dynamic stability involves matching load and resources, economic generator dispatch, reserve margin, and various system control settings



Niue Solar Installations , Pacific Environment Data Portal

Details of various solar installation in Niue. Captures the estimated annual kWh, percentage of total daytime electricity production, type of funding and funding source.



ENERGY PROFILE Niue

Solar PV: Solar resource potential has been divided into seven classes, each representing a range of annual PV output per unit of capacity (kWh/kWp/yr). The bar chart shows the proportion of a country's land area in each of these classes and the global distribution of land area across the classes (for comparison).

Niue

In July 2009, a solar panel system was installed, injecting about 50 kW into the Niue national power grid. This is nominally 6% of the average 833 kW electricity production. The solar panels are at Niue High School (20 kW), Niue Power Corporation office, (1.7 kW) [48] and the Niue Fook Hospital (30 kW).



Niue - 100% Renewable Energy Atlas

In recent years, Niue has implemented three grid-connected solar PV systems, solar water heaters, and LPG gas stoves in homes, all installed at a subsidized cost since renewable energy technology was very costly, particularly for the pacific islands' citizens. These systems were funded by the European Union.



Contact Us

For catalog requests, pricing, or partnerships, please visit:
<https://www.fundacja64.pl>