

Rangebans bess Djibouti





Rangebank bess Djibouti



Planning

The Rangebank BESS (Battery Energy Storage System) is an industrial scale BESS to be located in Cranbourne West, Victoria, Australia. It will provide 200MW / 400MWh capacity of reliable and flexible energy solutions.

Australia's Rangebank Battery Energy Storage System, Victoria's ...

The Rangebank BESS, Victoria's second largest storage system, was officially opened on 3 December 2024 by The Hon. Lily D'Ambrosia MP, Victorian Minister for Energy & Resources, together with Tom



Rangebank BESS

Rangebank BESS Construction Update. Construction work at the Rangebank BESS has made good progress in 2024 with all major equipment installed on prepared foundations. The Cranbourne Terminal Station Bay works were completed on schedule by AusNet and the Bay H energised on 9 May 2024.

Victoria's second largest battery opened at Cranbourne

Situated in the Rangebank Business Park in Melbourne's southeast, the jointly developed 200 MW/400 MWh BESS has the capacity to power 80,000 homes for an hour ...



Shell, Eku add 400 MWh battery to Victoria's grid

Less than 18 months after the start of construction, the 200 MW/400 MWh Rangebank BESS, first energized in August 2024, has officially commenced full operations. ...



Macquarie Asset Management's Green Investment Group and ...

Once fully operational, the 200MW / 400MWh Rangebank BESS will have the storage capacity to power the equivalent of 80,000 homes across Victoria for an hour during ...



Australia's Rangebank Battery Energy Storage System,

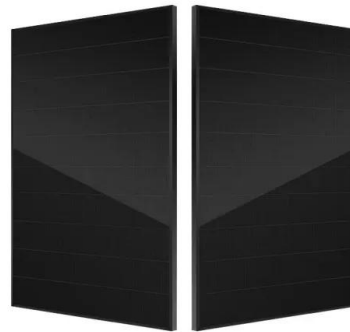
The Rangebank BESS, Victoria's second largest storage system, was officially opened on 3 December 2024 by The Hon. Lily D'Ambrosia MP, Victorian Minister for Energy & Resources, together with Tom





Rangebank BESS

Rangebank BESS (????? ????? ????? ?????) ??
????? ?? ?????-???? ??? ?? ?? ?? ????? ???????
???????? ??????? ?? ??? ??????? ?? ????????? ???
?? ???. BESS ?? ?? ??? ?????? Rangebank ?? 280S
Evans Road? ??????? ????



Victoria's second largest battery opened at Cranbourne

Situated in the Rangebank Business Park in Melbourne's southeast, the jointly developed 200 MW/400 MWh BESS has the capacity to power 80,000 homes for an hour during peak periods. Under a tolling agreement, Shell Energy will have access to 100 percent of the battery's capacity over the next 20 years, strengthening its growing battery portfolio.

Shell Energy opens Victoria's second-largest battery

Shell Energy has marked a significant milestone with the completion of Victoria's second largest battery, the Rangebank Battery Energy Storage System (BESS). Together with ...



Victoria's second largest battery opened at Cranbourne

Rangebank BESS will play a crucial role in helping stabilise Victoria's state electricity supply by providing additional storage capacity which can be discharged at times of peak demand. Situated in the Rangebank Business Park in Melbourne's southeast, the jointly developed 200 MW/ 400 MWh BESS has the capacity to power



80,000 homes for an

Shell-Backed Battery Storage Project in Melbourne Unlocks 200 ...

A consortium led by Eku Energy and Shell Energy has successfully completed the Rangebank Battery Energy Storage System (BESS) in Melbourne's Rangebank Business Park, marking the second-largest battery storage project in Victoria. With a capacity of 200 MW and 400 MWh of storage, the facility can power up to 80,000 homes.



Shell-Backed Battery Storage Project in Melbourne Unlocks 200 ...

A consortium led by Eku Energy and Shell Energy has successfully completed the Rangebank Battery Energy Storage System (BESS) in Melbourne's Rangebank Business ...



Rangebank BESS

The Rangebank BESS (Battery Energy Storage System) is an industrial scale BESS to be located in Cranbourne West, Victoria, Australia. It will provide 200MW / 400MWh capacity of reliable and flexible energy solutions.



Rangebank BESS

Macquarie Asset Management's Green Investment Group and Shell Energy Operations are partnering to deliver the battery. Through an offtake agreement, Shell Energy will have access to 100 per cent of the battery's offtake over a



20-year period.



Victoria's second largest 200 MW BESS opens

"Rangebank BESS is an important addition to Shell Energy's battery portfolio being our first grid-scale battery investment in Victoria and Shell's first direct equity investment in a utility scale BESS globally. It will help support a more resilient power system in Victoria, and a more reliable energy supply for our customers as the



Shell Energy opens Victoria's second-largest battery

Shell Energy has marked a significant milestone with the completion of Victoria's second largest battery, the Rangebank Battery Energy Storage System (BESS). Together with Eku Energy and minority equity partner and owner of Rangebank Business Park, Perfection Private, the 200 MW/ 400 MWh BESS has the capacity to power 80,000 homes for an hour

Victoria energy minister in attendance as work begins on 400MWh

Pre-construction activities commenced this week on Rangebank BESS, a 200MW/400MWh project in Victoria, Australia. Victoria energy and resources minister Lily d'Ambrosio was among



dignitaries in attendance to help ceremonially mark the start of work on the project at Rangebank Business Park in Cranbourne, southeast Melbourne.

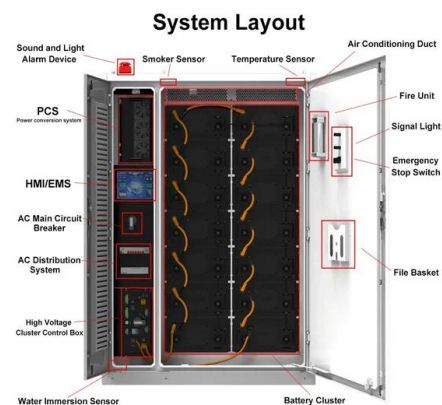


Victorian industrial scale battery storage system energised

Jointly developed by United Kingdom-headquartered energy storage business Eku Energy and Queensland-headquartered gen-tailer Shell Energy Australia, the Rangebank 200 MW / 400 MWh battery energy storage system (BESS) has successfully been energised.. Diversified energy network business AusNet Victoria's transmission connection team ...

Partners

The Rangebank Business Park is a 20 hectare industrial estate located in Cranbourne West, proud home to the Rangebank BESS. For more information about Rangebank Business Park click here. Fluence. Fluence Energy, Inc. ...



Victoria adds new big battery with Rangebank switched on

Less than 18 months after the start of construction, the 200 MW / 400 MWh Rangebank battery energy storage system (BESS), which was first energised in August, has officially commenced full operations, now helping to stabilise Victoria's electricity supply by providing additional storage capacity that can be





discharged at times of peak demand.

Victoria's second largest battery opened at Cranbourne

Rangebank BESS will play a crucial role in helping stabilise Victoria's state electricity supply by providing additional storage capacity which can be discharged at times of ...



Rangebank BESS Project, Victoria, Australia

The Rangebank BESS will deliver 200MW/400MWh of dispatchable power over two hours using Fluence Energy's Gridstack (TM) grid-scale energy storage system. The BESS features a modular design, consisting of an array of equipment that includes batteries, core transformers, inverters, and a large transformer.

Project updates

The Rangebank BESS (Battery Energy Storage System) is an industrial scale BESS to be located in Cranbourne West, Victoria, Australia. It will provide 200MW / 400MWh capacity of reliable and flexible energy solutions. Home Partners Community Planning Project Updates FAQ Contact.

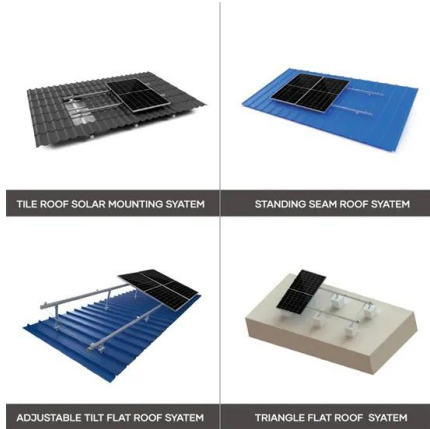


Shell, Eku add 400 MWh battery to Victoria's grid

Less than 18 months after the start of construction, the 200 MW/400 MWh Rangebank BESS, first energized in August 2024, has officially commenced full operations. The battery is helping to stabilize Victoria's electricity supply

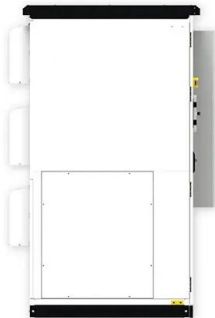


by providing additional energy storage capacity that can be discharged at times of peak demand.



Macquarie Asset Management's Green Investment Group and ...

Once fully operational, the 200MW / 400MWh Rangebank BESS will have the storage capacity to power the equivalent of 80,000 homes across Victoria for an hour during peak periods. The project, to be built on two hectares of land within the Rangebank Business Park in Melbourne's southeast, has reached financial close and is expected to be



Rangebank BESS

Rangebank BESS (????? ?????? ??????? ???????) ??
?????-????? ?????? ?? ?? ?????????????? ????????? ???????
?? ??????? ?? ?????????????? ?? ?????????????? ????????? ??
?????????

Contact Us

For catalog requests, pricing, or partnerships, please visit:
<https://www.fundacja64.pl>