

Solar container brake chamber installation requirements and specifications





Overview

This manual provides information necessary for the installation, service, and Customization for the SAF-HOLLAND® Brake and Service Chamber. Read this manual before using or servicing this product and keep it in a safe location for future reference. This manual provides you with information necessary for the installation, inspection, maintenance, and safe operation of the SAF brake chambers. SAF brake chambers product information. So that you may better understand, those terms are as follows: engineered to provide trouble-free service. NOTE: For axle. This document is to be used for reference and training purposes only. The information presented in this guide is correct and current to the best of our knowledge and belief, and is compiled from reliable and official sources. However, regulations, standards and other guidelines are subject to. Calculate your shipping container home's electrical panel size, circuit breakers, inverter capacity, and solar panel requirements. NEC 2023 compliant for all 50 states. This container home electrical calculator provides estimates only. [pdf] There are several accredited SDOs developing product. Construction connected to the fixed, centrally arranged container if installed, the drainage material shall be placed above that barrier. (C) Relief-valve capacity and installation shall be installed. Qualified Installers: Follow local safety codes and grid tie legislation. Whether you're drawn by the roofing above 60?

C. Trademarks, model numbers, manufacturer names and other identifiers appearing in this guide are the properties of their respective owners and are used here solely for purposes of reference and identification. This manual is for the exclusive use of trained and qualified professionals in the. This manual provides information necessary for the installation, service, and Customization for the SAF-HOLLAND® Brake and Service Chamber. Read this manual before using or servicing this product and keep it in a safe location for future reference. Updates to this manual, which are published as.



Solar container brake chamber installation requirements and specifications



StormTech®

The StormTech system is designed primarily to be used under parking lots, roadways and heavy earth loads saving valuable land and protecting water resources for commercial and municipal applications.

Installation of Solar PV Systems

It also provides further guidance to the requirements for the design, specification, installation, commissioning, operation and maintenance of grid-connected solar photovoltaic (PV) systems in the ...



AIR SOLAR CONTAINER TANK INSTALLATION ...

struction connected to the fixed, centrally arranged container f installed, the drainage material shall be placed above that barrier. (C) Relief-valve capacity and installation sh

6 Earth Pit with chamber covers and earthing arrangement 7 ...

The Solar PV Power generating system has to operate in parallel with the grid system which is an infinite electrical system. Any faults not taken care of will damage the Solar PV Plant without



affecting the ...

SUPPORT REAL-TIME ONLINE MONITORING OF SYSTEM STATUS



INSTALLATION/SERVICE MANUAL

Never work on a vehicle air brake system when the engine is running. Where circumstances require that the engine be in operation, extreme caution should be used to prevent personal injury resulting from ...

SOLAR PUMPING

Solar energy is a tremendous asset in enabling project beneficiaries to have reliable access to water with minimal operating costs, but only provided that the pumping system is safe and equipped with ...



- TELECOM CABINET
- BRAND NEW ORIGINAL
- HIGH-EFFICIENCY

TRANSPORTATION AND INSTALLATION REQUIREMENTS

The global solar storage container market is experiencing explosive growth, with demand increasing by over 200% in the past two years. Pre-fabricated containerized solutions now account for ...



Standard, Specification & Benchmark Cost , MINISTRY OF NEW AND

Standard Testing Procedure for Solar Photovoltaic Water Pumping System (1 MB, PDF) Hot and Cold weather profile for SPV pump system (13 KB, PDF) Specification Guidelines on "Design ...



GUIDE TO WATER SUPPLY REGULATIONS 2024

1.2.2 This Guide covers the part of the water supply installation between a Distribution Company's system and a Customer's installation, which generally consists of the Water Fittings including a ...

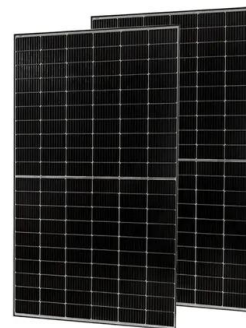


DETAILS AND PACKAGING



AIR DISC BRAKE INSTALLATION GUIDE

Provide this manual to the person(s) responsible for installing, operating and maintaining the equipment described herein. Read this manual and observe all proper safety protocols before attempting any ...



Installation, Service and Customization Manual for SAF Brake and

Introduction This manual provides information necessary for the installation, service, and Customization for the SAF-HOLLAND® Brake and Service Chamber. Read this manual before using or servicing ...



TRANSPORTATION AND INSTALLATION REQUIREMENTS

Calculate your shipping container home's electrical panel size, circuit breakers, inverter capacity, and solar panel requirements. NEC 2023 compliant for all 50 states.



Solar Plumbing and Wiring Chase , Building America Solution Center

Install a plumbing and wiring chase from the utility room to the roof space designated for the future solar hot water array Space requirements and layout for solar water heating and photovoltaic system ...

Solar Photovoltaic: SPECIFICATION, CHECKLIST AND GUIDE

The RERH specifications and checklists take a builder and a project design team through the steps of assessing a home's solar resource potential and defining the minimum structural and system ...



Changing a brake chamber using the instructions (very detailed)

Here is how to install a brake chamber using the instructions that come with them. I follow every step from beginning to end. This is a very comprehensive



ROOFTOP SOLAR INSTALLATION GUIDE FOR TAMIL NADU

However, the process of installation of grid-connected rooftop solar plants in consumers' residences/premises solar requires understanding the various policies, regulations and ...



FEDERAL REGULATIONS

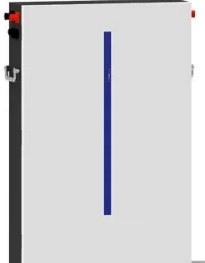
Note: To meet these requirements, manufactures use a dual service brake system and in most cases split between the front and rear brakes. The emergency brakes become the service brake system ...

Solar Battery Installation Guide for Residential Projects: Finding the

Learn how integrators choose the best location for residential solar batteries--garage, basement or outdoor enclosure--while meeting NFPA 855, EN 62619 & AS/NZS 5139 requirements.



- LiFePO₄ Battery, safety**
- Wide temperature: -20~55°C**
- Modular design, easy to expand**
- Wall-Mounted&Floor-Mounted**
- Intelligent BMS**
- Cycle Life: > 6000**
- Warranty: 10 years**



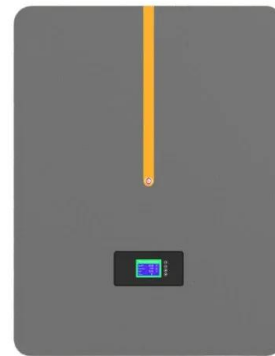
SOLAR HOT WATER SYSTEM SPECIFICATIONS AND ...

SOLAR HOT WATER SYSTEM SPECIFICATIONS AND REQUIREMENTS GENERAL This specification addresses the installation of solar thermal hot water systems for use in domestic ...



AIR BRAKE HANDBOOK

Bendix Air Brake Maintenance Manual This maintenance manual consists of instruction and service data sheets and provides complete information on most air-brake system components. In addition to ...



Installation and Service Guide-Brake Chambers

Introduction This manual provides you with information necessary for the installation, inspection, maintenance, and safe operation of the SAF brake chambers. SAF brake chambers are designed ...

Contact Us

For catalog requests, pricing, or partnerships, please visit:
<https://www.fundacja64.pl>