

Solar container normally open contact switch





Overview

A NO (Normally Open) contact remains open until a predefined specific condition occurs. By default, a NO switch does not conduct current; it needs to be energized to allow current to flow. An NC (Normally Closed) contact remains closed until a specific condition is met. NO NC contactor full form is Normally Open and Normally Closed contactor. Before proceeding further, let me briefly introduce what a contactor is. A contactor serves as an electrical switch that monitors and controls a circuit. People use them to connect or disconnect a circuit. It offers a more. There is a switch energy storage contact in series in the closing circuit, that is to say, the switch cannot be closed without energy storage. However, there is no non-energy storage contact in series in the opening circuit. So even if the switch is not charged, it can be jumped off. [pdf] When a. Please help with a resource for this switch - all I can find is the std normally closed switches. From the Grunfos doc: "The CU200 pump control box should be selected, since it includes terminals for a pressure switch, which will control the pump's on/off operation via the pressure in the storage. Can a latching power switch be used with a normally open relay?

I am thinking maybe these aren't compatible with each other, but before I change to a rocker switch I would get a second opinion. Thanks in advance! Sounds like a defective switch. A latching pushbutton switch is electrically identical. Normally open and normally closed contacts/switches can be found and used on switches, relays, and PLCs. Let's start by taking a look at what we mean by normally open or (NO). What Does Normally Open (NO) Mean?

A normally open switch or contact is an electrical switch that does not allow current to. Normally closed (NC) and normally open (NO) contacts are terms used in the context of electrical switches and relays, but what's the difference between a normally closed vs normally open switch?

These terms describe the default state of a contact in a switch or relay when no external force or input.



Solar container normally open contact switch



Latching push button switch with normally open relay. : r/diySolar

A latching pushbutton switch is electrically identical to any other (rocker) switch. It should maintain a physical contact, so yes can be used with a normally open relay.

What are the terminal ID numbers for the normally open and normally

Issue: Tesys D line normally open and normally closed auxiliary contact terminals. Product Line: IEC Contactors and Starters Environment: TeSys(TM) D Contactors and Overload Relays ...



NO and NC Contact in Electrical: Understanding the ...

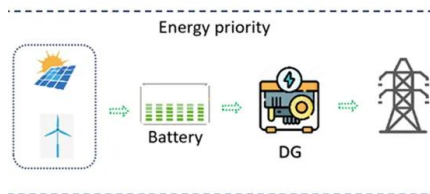
What is NO and NC Contact? In electrical systems, NO and NC stand for Normally Open and Normally Closed, respectively. These terms describe the default state ...

NO NC Contactor - Normally Open vs. Normally Closed ...

The Normally Open Contactor has an open circuit, and no current flows through it. In contrast, the normally closed Contactor lets the current flow through the closed circuit in its



normal ...



What are normally open and normally closed contacts? , Schneider

Normally open contacts are open when they are not actuated and close when energized. Normally closed contacts are closed when they are not actuated and open when energized.

What are Normally Closed vs Normally Open Switch Contacts?

In summary, the terms "normally open" and "normally closed" refer to the default states of contacts in a switch or relay. They describe whether the contacts are open or closed when there is ...



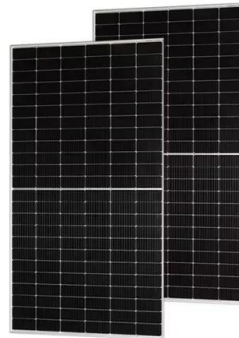
Info Byte: Normally Open vs. Normally Closed: What Does It Mean?

'Normally open' (also called N/O, N.O., or simply NO) means that the switch will be in the open position (no electricity flows) except when the input signal is provided. As soon as the input ...



MEDIUM VOLTAGE SWITCHGEAR

The switching capacity may get a negative influence from the different arrangement of the switchgear with contact arms, moving contacts, conductor bars, etc. For this reason, the test duties T10, T30, ...



Normally Open vs. Normally Closed: What Does It Mean?

A normally open contact is one where the circuit remains open (i.e., incomplete) in its default state. No current flows through the circuit unless the switch or relay is actuated.

What are normally open and normally closed contacts? , Schneider

Issue: Normally open and normally closed contacts Product Line: Push buttons, contactors and starters, relays Environment: All push buttons, contactors and starters, relays Cause: ...



What Do 'Normally Open' (NO) and 'Normally Closed' (NC) Mean?

What's the difference between momentary vs latching switches and normally open normally closed contacts? Momentary vs latching describes the switch's physical action, while normally open ...





NORMALLY OPEN AND NORMALLY CLOSED SWITCH CONTACTS

There is a switch energy storage contact in series in the closing circuit, that is to say, the switch cannot be closed without energy storage. However, there is no non-energy storage contact in series in the ...



Contact "Normal" State and Make/Break Sequence

The schematic symbology for switches varies according to the switch's purpose and actuation. A normally-open switch contact is drawn in such a way as to signify ...

Normally Open Vs Normally Closed: What Do They Mean?

Yes, you can use one button or switch to operate both normally open and normally closed contacts. This type of configuration is widely used when incorporating push buttons with PLCs ...



Auxiliary Switch: Normally open vs Normally closed

The 'b' contact (normally closed contacts) are closed when the breaker is open and open when the breaker is closed. Further down is a logic table for the switch contacts.



Relay Normally Open vs Normally Closed Contacts

The term Normally Closed (N.C.) identifies the relay contact(s) that are closed when the relay is deenergized. This is the resting position for the relay with spring tension holding the N.C. ...

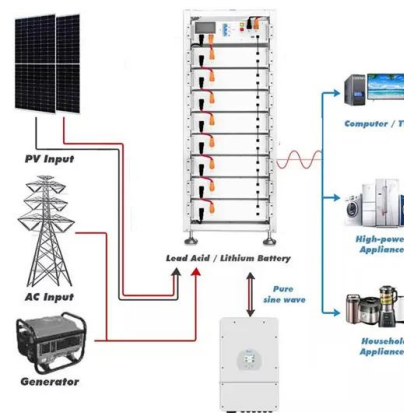


Understanding the Float Switch: A Comprehensive ...

A normally open switch remains open until the float reaches a certain level, at which point it closes the circuit. This type of float switch is active in the ...

Normally Open Pressure Switch -- northernarizona-windandsun

normally-open configuration, where the contacts within the switch are in the open position when the pressure is below the maximum set-point. When the pressure in the system rises to the maximum ...



Understanding Normally Open and Normally Closed Contacts in ...

In this educational video, we dive into the world of electrical circuits and explore the fundamental concepts of "Normally Open and Normally Closed Contacts .



NO and NC Contacts , Normally Closed vs Normally Open Sensors - Upmation

We all know how normally closed and normally open sensors and contacts work and how they differ from each other. But have you ever noticed that why in emergency push buttons and stop push ...



Normally closed direct opening contacts

Distribution and Control, Direct Opening Contacts, Closed For the M22 and 10250T line of operators, all (NC) contacts are direct opening action. The NC contacts are physically forced open by direct ...

Auxiliary Switch: Normally open vs Normally closed

The ' b ' contact (normally closed contacts) are closed when the breaker is open and open when the breaker is closed. Further down is a logic table for the switch ...



Contact Us

For catalog requests, pricing, or partnerships, please visit:
<https://www.fundacja64.pl>