

# Solar container substances of cuscuta





## Overview

---

After simultaneous application of  $^3\text{H}$ -sucrose and  $^{14}\text{C}$ -labelled phloem-mobile amino acids, phytohormones, and xenobiotica to the host, corresponding percentages of the translocated compounds are found in the parasite. The results of translocation experiments with labelled compounds, phloem-mobile dyes and the virus should be considered as unequivocal evidence for a symplastic transfer of phloem solutes between *Cuscuta* species and their compatible hosts. This paper is available online free of all access charges.

**Abstract:** The *Cuscuta reflexa* is a leaf less parasitic angiosperm belonging to the family Convolvulaceae and it is directly attaches to the host plants through the haustoria. During this investigation we find that the plant is a hemiand holoparasite, living on wood yielding, fruit yield in great.

**Abstract:** *Cuscuta campestris* is a holoparasitic plant that depends on the host for water, nutrients, and photosynthetic substances. The purpose of this research was to evaluate the effects of the host species on the content of bioactive and health-promoting substances in the *Cuscuta* seeds to test. The *Cuscuta* genus contains approximately 100 species (Flora Rombniei, 1960) of holoparasitic flowering plants with climbing stems, spread all over the world. Many holoparasitic angiosperms create important damages in crops, orchards and woods. The holoparasitic species are always obligate. The transfer of substances in the phloem from host to the parasite is not selective. After simultaneous application of  $^3\text{H}$ -sucrose and  $^{14}\text{C}$ -labelled phloem-mobile amino acids, phytohormones, and xenobiotica to the host, corresponding percentages of the translocated compounds are found in the. After simultaneous application of  $^3\text{H}$ -sucrose and  $^{14}\text{C}$ -labelled phloem-mobile amino acids, phytohormones, and xenobiotica to the host, corresponding percentages of the translocated compounds are found in the parasite. An open continuity between the host phloem and the *Cuscuta* phloem via the.



## Solar container substances of cuscuta

---



### HISTO-ANATOMICAL INVESTIGATIONS ON SOME CUSCUTA

...

The haustoria cells migrate through the epidermis and cork and invade the central cylinder of another Cuscuta stem; again, as far as we know, this aspect has never been discussed in literature until now.

### Transfer of phloem-mobile substances from the host plants to the

In the study presented here, the transport of sucrose, xenobiotics, phloem-mobile fluorescent dyes, and viruses was investigated in different host-parasite systems. The results are ...



### Host range, Anatomy, Biochemistry and Impacts of Cuscuta ...

The Cuscuta is known to contain several antibacterial, antiviral and antiproliferative substances. It is known to contain compound like phenolics and flavonoids and since flavonoids exhibit anti ...

### Scheme of chemical translocation between Cuscuta ...

Download scientific diagram , Scheme of chemical translocation between Cuscuta and host plant. Sieve of Cuscuta haustorium allows translocation of metabolites ...



### Cuscuta Species Identification Based on the Morphology of ...

The genus *Cuscuta* (Convolvulaceae) comprises well-known parasitic plants. *Cuscuta* species are scientifically valuable, as their life style causes extensive crop damage. ...



### Transfer of phloem-mobile substances from the host plants to the

An open continuity between the host phloem and the *Cuscuta* phloem via the haustorium was demonstrated in CLSM pictures after application of the phloem-mobile fluorescent probes, ...



### Host range, anatomy, biochemistry and impacts of *Cuscuta reflexa* ...

The *Cuscuta reflexa* is a leaf less parasitic angiosperm belonging to the family Convolvulaceae and it is directly attaches to the host plants through the haustoria. During this investigation we find that the ...





### One organ to infect them all: the Cuscuta haustorium , Annals of ...

One possibility are plant volatiles. Volatile substances are released by many plants, and they have indeed been implicated in one study in guiding growth of Cuscuta pentagona seedlings ...

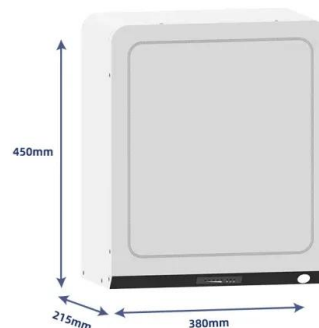


### Host range, Anatomy, Biochemistry and Impacts of Cuscuta ...

Cuscuta is an obligate angiosperm parasitic climber found commonly throughout India. It has about 100-170 species which attach to various trees, shrubs, herbs and affect commercially valuable crops9. It ...

### The parasitic mechanism of the holostemparasitic plant ...

Cuscuta is a stem holoparasitic plant without leaves or roots, which develops a haustorium and sucks nutrients from host plants. The genus Cuscuta comprises about 200 species, many of which can ...



### Cuscuta

Cuscuta species (dodders) are parasitic plants that are able to grow on many different host plants and can be destructive to crops. The connections between Cuscuta and its hosts allow movement of not ...



### Transfer of phloem-mobile substances from the host plants to the

After simultaneous application of 3H-sucrose and 14C-labelled phloem-mobile amino acids, phytohormones, and xenobiotica to the host, corresponding percentages of the translocated ...



### Cuscuta

Cuscuta is defined as a parasitic plant that forms unique connections with its host by developing haustoria, which allow for the translocation of substances, including macromolecules such as nucleic ...

### Cuscuta , Journal of Parasite Research

Cuscuta's rootless stems attach to the host plant and absorb essential nutrients, water, and minerals, to the detriment of the host plant. By taking resources from other plants, Cuscuta is able to survive and ...



### The plant vampire diaries: a historic perspective on Cuscuta research

Whether Cuscuta employs the same changes in hormone concentrations (especially auxin) as found during the shade avoidance of autotrophic plants has, to our knowledge, not been investigated.



### Host range, anatomy, biochemistry and impacts of Cuscuta ...

The very common plants viz. Ziziphus mauritiana, Cajanus cajan and Ficus glomerata have very favorable hosts of Cuscuta, (Fig. 1) and when other suitable hosts were nearby Cuscuta shoots, ...



### Scheme of chemical translocation between Cuscuta and host plant.

Download scientific diagram , Scheme of chemical translocation between Cuscuta and host plant. Sieve of Cuscuta haustorium allows translocation of metabolites and proteins less than 30 kDa. from

### The genus Cuscuta (Convolvaceac): An updated review on ...

Cuscuta, commonly known as dodder, is a genus of family convolvaceace. Approximately 170 species of Cuscuta are extensively distributed in temperate and subtropical areas of the world. Species of ...

TAX FREE

**Product Model**  
HJ-ESS-215A(100KW/215KWh)  
HJ-ESS-115A(50KW 115KWh)

**Dimensions**  
1600\*1280\*2200mm  
1600\*1200\*2000mm

**Rated Battery Capacity**  
215KWH/115KWH

**Battery Cooling Method**  
Air Cooled/Liquid Cooled



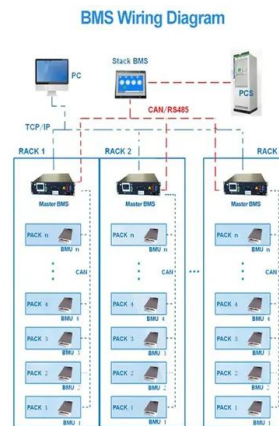
### One organ to infect them all: the Cuscuta haustorium

One possibility are plant volatiles. Volatile substances are released by many plants, and they have indeed been implicated in one study in guiding growth of Cuscuta pentagona seedlings towards ...



## Cuscuta

1 Introduction *Cuscuta epithymum* (L.) L. (*C. epithymum*; Convolvulaceae) is a member of only parasitic genus in this family of twining species (The Plant List, 2017). The numbers of *Cuscuta* species are ...

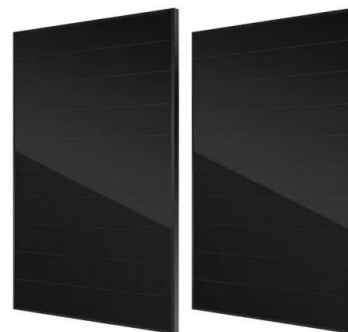


## A Review on Phytoconstituents and Biological activities of *Cuscuta*

*Cuscuta* species have been reported to contain several phytoconstituents including flavonoids, glycosides, alkaloid, tannins, lignins and other organic substances. Besides them also ...

## Development of Parasitic Organs of a Stem Holoparasitic Plant in Genus

Tight adhesion between *Cuscuta* and the host can be achieved by secretion of adhesive substances and elongation of cells toward the host surface. The divided epidermal cells of *Cuscuta campestris* ...



## A Review on Phytoconstituents and Biological activities of *Cuscuta*

*Cuscuta* spp widely used as ethnomedicinal system of medicine as discussed above, the reason behind this must have chemical constituents in them which exhibit different types of activities. ...



## An Insight into *Cuscuta campestris* as a Medicinal Plant: ...

The purpose of this research was to evaluate the effects of the host species on the content of bioactive and health-promoting substances in the *Cuscuta* seeds to test the following hypothesis: these ...



## Parasitic plants of the genus *Cuscuta* and their interaction with

By comparison with plant-microbe interaction, little is known about the interaction of parasitic plants with their hosts. Plants of the genus *Cuscuta* belong to the family of Cuscutaceae and comprise about ...

## Contact Us

---

For catalog requests, pricing, or partnerships, please visit:  
<https://www.fundacja64.pl>