

# **South Georgia and South Sandwich Islands power grid switching**





## Overview

---

South Georgia and the South Sandwich Islands (SGSSI) is a remote island territory of the United Kingdom. It is located in the South Atlantic Ocean, south of the equator. The territory consists of 3592 square kilometers of land and 700 square kilometers of water. It has a population of 311 people.



## South Georgia and South Sandwich Islands power grid switching

---



### Government of South Georgia & the South Sandwich Islands

The Government of South Georgia & the South Sandwich Islands issues Regulated Activity Permit (RAP) for certain types of activities. There are three categories of application depending on the complexity of your project.

### SOUTH GEORGIA AND THE SOUTH SANDWICH ISLANDS: ...

The South Sandwich Islands, actively volcanic, consist of a 390-km-long chain of 11 main islands. Fisheries in the South Georgia Maritime Zone are managed using an ecosystem approach aiming to conserve the marine environment.



### South Georgia and South Sandwich Islands MPA

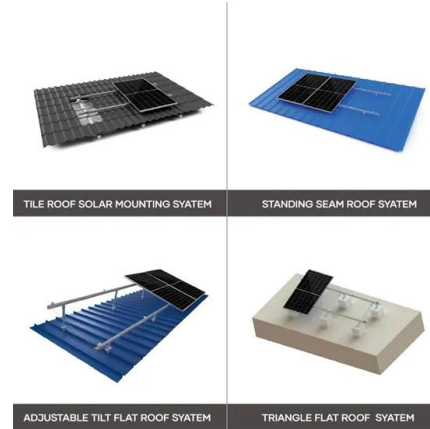
The South Georgia and South Sandwich Islands MPA was designated in 2012, with additional provisions implemented in 2013, and further enhanced measures announced in 2018 following the first 5-year MPA review.

### South Georgia and the South Sandwich Islands

South Georgia and the South Sandwich Islands are a collection of islands in the South Atlantic Ocean. Most of the islands, rising steeply from the sea, are rugged and mountainous. At higher



elevations, the islands are permanently covered with ice and snow.



Energy storage(KWH)

**102.4kWh**

Nominal voltage(Vdc)

**512V**

Outdoor All-in-one ESS cabinet



(: South Georgia and the South Sandwich Islands, SGSSI )? , ?

## South Georgia and South Sandwich Islands

South Georgia and South Sandwich Islands. Key Data. General information: Constitutional status: Overseas Territory of the United Kingdom; Land area: 3,903 square kilometers; Population: no permanent population; Energy transition: Installed capacity in 2019: MW; Power generation in 2020: GWh; Renewable energy generation capacity: MW; Main energy



(:South Georgia and the South Sandwich Islands,SGSSI)?,?,3592? 700,311?, ...





## South Georgia and South Sandwich Islands

South Georgia and South Sandwich Islands. Key Data. General information: Constitutional status: Overseas Territory of the United Kingdom; Land area: 3,903 square kilometers; Population: no ...



## South Georgia and the South Sandwich Islands

South Georgia and the South Sandwich Islands are a collection of islands in the South Atlantic Ocean. Most of the islands, rising steeply from the sea, are rugged and mountainous. At higher elevations, the islands are permanently covered ...

## SOUTH GEORGIA AND THE SOUTH SANDWICH ISLANDS: THEIR ...

The South Sandwich Islands, actively volcanic, consist of a 390-km-long chain of 11 main islands. Fisheries in the South Georgia Maritime Zone are managed using an ecosystem approach ...



(:South Georgia and The South Sandwich Islands,:SGSSI),,? 56°18?-59°30??26°-28°30?,?



(South Georgia and South Sandwich Islands)?  
,1982?



### The South Georgia and the South Sandwich Islands MPA: ...

South Georgia and the South Sandwich Islands (SGSSI) are surrounded by oceans that are species-rich, have high levels of biodiversity, important endemism and which ...



### South Georgia and the South Sandwich Islands

South Georgia and the South Sandwich Islands are a collection of exceptionally remote islands in the Southern Atlantic. Although considered as one entity they represent two physically distinct ...



### South Georgia and the South Sandwich Islands

South Georgia and the South Sandwich Islands are a collection of exceptionally remote islands in the Southern Atlantic. Although considered as one entity they represent two physically distinct island groups, with the South Georgia cluster ranging between 560 and 800km west of the South Sandwich Island arc (Figure 1).





## The South Georgia and the South Sandwich Islands MPA: ...

South Georgia and the South Sandwich Islands (SGSSI) are surrounded by oceans that are species-rich, have high levels of biodiversity, important endemism and which also support large aggregations of charismatic upper trophic level species.



## Government of South Georgia & the South Sandwich Islands

The Government of South Georgia & the South Sandwich Islands issues Regulated Activity Permit (RAP) for certain types of activities. There are three categories of application ...



## South Georgia and South Sandwich Islands MPA

The South Georgia and South Sandwich Islands MPA was designated in 2012, with additional provisions implemented in 2013, and further enhanced measures announced in 2018 following ...



## Contact Us

---

For catalog requests, pricing, or partnerships, please visit:  
<https://www.fundacja64.pl>