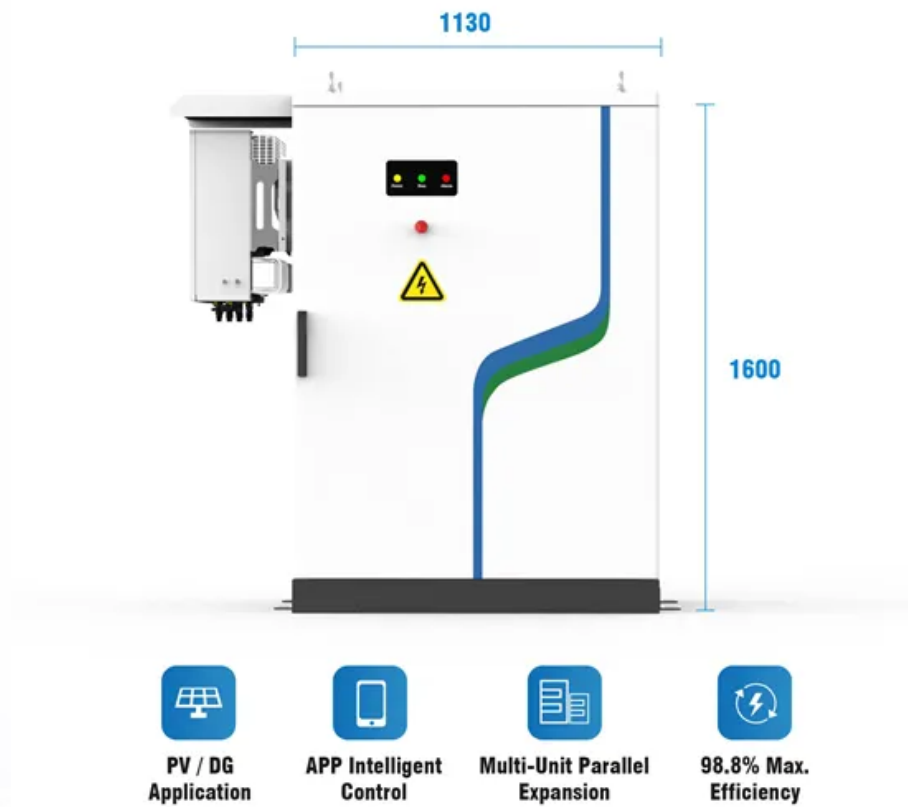


# Stp275 20 wfw Greenland





## Stp275 20 wfw Greenland



### STP275

20 40 / 30 / 6 28 / 180 840 (NOCT) 45±2°C  
(Pmax) -0.41 %/°C (Voc) -0.33 %/°C (Isc) 0.067  
%/°C STC STP275-20/ Wfw STP270-20/ ...

### Suntech Power STP275-20/Wfw (5BB) poly I ...

Suntech Power STP275-20/Wfw (5BB) -  
polykristallines Hochleistungssolarmodul mit 275  
Watt in 5 Busbar-Technologie Nennleistung: 275  
W Leistungstoleranz: 0/+5W Länge x Breite x  
Höhe: 1650 x 992 x 35 mm Frontabdeckung: ...



### STP275

0 5 10 15 20 25 30 35 40 STP275 - 20/Wfm ???  
1000 ?????????????????????? -?-(STP275-20/Wfm) ??  
6??? ?? 60(6×10) ...

### Superpoly STP285

NOCT: Irradiance 800 W/m<sup>2</sup>, ambient  
temperature 20 °C, AM=1.5, wind speed 1 m/s;  
Best in Class AAA solar simulator (IEC 60904-9)  
used, power measurement uncertainty is within  
+/- 3% All technical data at standard test



condition

Sample Order  
UL/KC/CB/UN38.3/UL



### Solar Panel

Suntech STP275-20/Wfw = Suntech STP 275-20 / Wfw The solar panels Suntech STP275-20/Wfw are polycrystalline panels with 275Wp. \* New and unused surplus items \* Delivery or collection by the customer possible; Please note! The PV modules are remaining stocks. The sale to entrepreneurs takes place under exclusion of any material defect liability.

### STP280S

Maximum Series Fuse Rating 20 A Power Tolerance 0/+5 W STC: Irradiance 1000 W/m<sup>2</sup>, module temperature 25 °C, AM=1.5; Best in Class AAA solar simulator (IEC 60904-9) used, power measurement uncertainty is within +/- 3% NOCT STP285S-20/ Wfw STP280S-20/ Wfw STP275S-20/ Wfw Maximum Power at NOCT (Pmax) 210.4 W 206.5 W 202.8 W



12V 10AH



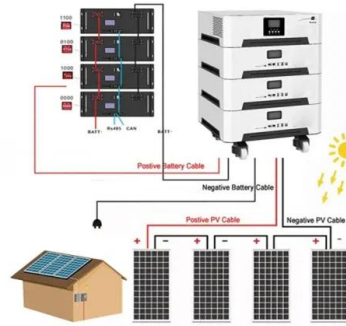
????????????? ?????? ...

?STP275-20/Wfw? ???>  
?????(?????325W?????275W)?



### Suntech STP275

Suntech STP275 - 20/Wfw Home; Suntech STP275 - 20/Wfw 275 Watt POLYCRYSTALLINE SOLAR MODULE. Tier 1 (???)



### Suntech Power , STP265-275

Wuxi Suntech Power Co., Ltd. Solar Panel Series STP265-275 - 20/Wfw. Detailed profile including pictures, certification details and manufacturer PDF STP270-20/ Wfw STP275-20/ Wfw Warranty Product Warranty 12 Years Power Warranty 25 Years of 80.7% Output Power Electrical Data at STC Maximum Power (Pmax) 265 Wp 270 Wp

### STP275

NOCT: Irradiance 800 W/m2, ambient temperature 20 °C, AM=1.5, wind speed 1 m/s; Best in Class AAA solar simulator (IEC 60904-9) used, power measurement uncertainty is within +/- 3% AU-STP-Wfj-NO2.01-Rev 2018



### Módulo Fotovoltaico Suntech STP275-20/WFW (275 Wp)

Painel solar fotovoltaico de 60 células, de excelente qualidade, policristalino, com uma potência de 275 Wp, com 5 busbar, de um dos fabricantes mais reconhecidos mundialmente pela sua qualidade, inovação e fiabilidade. Tolerância positiva. Com estas características, proporciona a melhor relação preço/performance em instalações de autoconsumo fotovoltaico.





### STP275

Current-Voltage & Power-Voltage Curve (275-20)  
Excellent performance under weak light conditions: at an irradiation intensity of 200 W/m<sup>2</sup> (AM 1.5, 25 °C), 96.5% or higher of the STC efficiency (1000 W/m<sup>2</sup>) is achieved Dealer information Mechanical Characteristics Solar Cell Polycrystalline silicon 6 inches No. of Cells 60 (6 × 10)

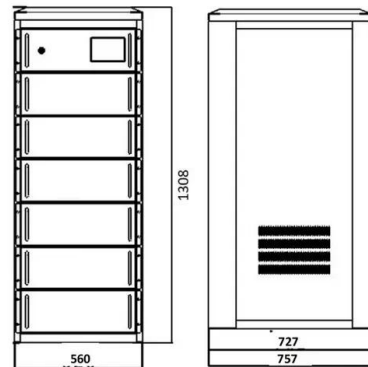


### STP275

NOCT: Irradiance 800 W/m<sup>2</sup>, ambient temperature 20 °C, AM=1.5, wind speed 1 m/s; Best in Class AAA solar simulator (IEC 60904-9) used, power measurement uncertainty is within +/- 3% STP275- 20/Wfw STP270 - 20/Wfw STP265 - 20/Wfw Temperature Characteristics Nominal Operating Cell Temperature (NOCT) 45±2°C Temperature Coefficient of Pmax -0.41

### STP280

Maximum Series Fuse Rating 20 A Power Tolerance 0/+5 W STC: Irradiance 1000 W/m<sup>2</sup>, module temperature 25 °C, AM=1.5; Tolerances of Pmax, Voc and Isc are all within ±5% NMOT STP285-20/ Wfm STP280-20/ Wfm STP275-20/ Wfm Maximum Power at NMOT (Pmax) 214.4 W 210.3 W 206.4 W Optimum Operating Voltage (Vmp) 29.8 V 29.5 V 29.2 V



### STP275

NOCT: Irradiance 800 W/m<sup>2</sup>, ambient temperature 20 °C, AM=1.5, wind speed 1 m/s; Best in Class AAA solar simulator (IEC 60904-9) used, power measurement uncertainty is within +/- 3% STP275- 20/Wfw STP270 - 20/Wfw STP265 - 20/Wfw Temperature Characteristics Nominal Operating Cell Temperature (NOCT) 45±2°C



Temperature Coefficient of Pmax -0.41 %/°C



### STP275

20 40 / 30 / 6 28 / 180 840 (NOCT) 45±2°C  
(Pmax) -0.41 %/°C (Voc) -0.33 ...



### STP280

Maximum Series Fuse Rating 20 A Power Tolerance 0/+5 W STC: Irradiance 1000 W/m<sup>2</sup>, module temperature 25 °C, AM=1.5; Best in Class AAA solar simulator (IEC 60904-9) used, power measurement uncertainty is within +/- 3% NOCT STP280-20/ Wfw STP275-20/ Wfw STP270-20/ Wfw Maximum Power at NOCT (Pmax) 206.3 W 200.6 W 198 W

### STP280

STP275 - 20/Wfw 5 PREMIUM Years WARRANTY  
Weak light Excellent weak light performance  
More power output in weak light condition, such as haze, cloudy, and morning lower hot spots  
Reduce the hot spots and minimize panel degradation \*\* Certifications and standards: IEC 61215, IEC 61730, conformity to CE





## Superpoly STP285

20 A Leistungstoleranz 0/+5 W STC  
(Standardtestbedingungen): Strahlungsintensität  
1,000W/m<sup>2</sup>, Modultemperatur 25 °C,  
Luftmasse=1,5. Bei Einsatz des führenden AAA-  
Solarsimulators (IEC60904-9) können  
Messgenauigkeiten von  $\pm 3\%$  erreicht werden.  
NOCT STP285-20/ Wfw STP280-20/ Wfw  
STP275-20/ Wfw

## Contact Us

---

For catalog requests, pricing, or partnerships, please visit:  
<https://www.fundacja64.pl>