

Svalbard and Jan Mayen krc energy





Svalbard and Jan Mayen krc energy



Svalbard and Jan Mayen

Svalbard and Jan Mayen (Norwegian: Svalbard og Jan Mayen, ISO 3166-1 alpha-2: SJ, ISO 3166-1 alpha-3: SJM, ISO 3166-1 numeric: 744) is a statistical designation defined by ISO 3166-1 for a collective grouping of two remote jurisdictions of Norway: Svalbard and Jan Mayen.

ENERGY IN THE WEST NORDICS AND THE ARTIC

This report is a sub report of the project Energy in the West Nordic areas and the Arctic - EVA. The purpose of the projects is to look at the energy situation and the local challenges in the five areas Iceland, Greenland, Faroe Islands, Svalbard and Jan Mayen. Some of the data for the main project (energy situation, energy demand and scenario



Deep-sea mining to support green transition? The Norwegian ...

The area potentially concerned stretches from Svalbard to Jan Mayen Island, covering 280 000 square kilometers of Arctic seabed. Despite protests and warnings from environmental organizations, scientists and many politicians, Norway has decided to go ahead with the project.

Svalbard and Jan Mayen

Svalbard and Jan Mayen (Norwegian: Svalbard og



Jan Mayen, ISO 3166-1 alpha-2: SJ, ISO 3166-1 alpha-3: SJM, ISO 3166-1 numeric: 744) is a statistical designation defined by ISO 3166-1 for a collective grouping of two remote ...

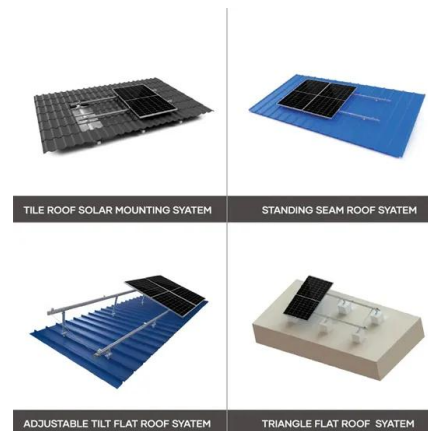


ENERGY IN THE WEST NORDICS AND THE ARTIC

for creating knowledge to support energy and climate targets in the Nordics applies not just to the larger countries of the Nordic region, but also the more sparsely populated areas of the West ...

Phase-outs at the edge of the world: Interconnections between ...

Bundled together are social relationships, feelings of 'home', the infrastructures, concerns over safety and energy security, the official Norwegian Svalbard policy developed ...



(PDF) Svalbard and Jan Mayen , Tormod Klemsdal

As the ocean currents meet around the island, air masses and air currents also converge, producing strong winds and a high wave energy along the coast of the island. From Iceland the North-Atlantic Midoceanic Ridge stretches NE as the Jan Mayen Ridge.



Phase-outs at the edge of the world: Interconnections between energy ...

Bundled together are social relationships, feelings of 'home', the infrastructures, concerns over safety and energy security, the official Norwegian Svalbard policy developed across the Norwegian ministries, and local ambitions for maintaining a sense of community despite an increasingly high annual turnover.



(PDF) Svalbard and Jan Mayen , Tormod Klemsdal

As the ocean currents meet around the island, air masses and air currents also converge, producing strong winds and a high wave energy along the coast of the island. From Iceland the North-Atlantic Midoceanic Ridge stretches NE as the ...

„(: Svalbard and Jan Mayen Islands)?



ENERGY IN THE WEST NORDICS AND THE ARTIC

This report is a sub report of the project Energy in the West Nordic areas and the Arctic - EVA. The purpose of the projects is to look at the energy situation and the local challenges in the ...



Transitioning remote Arctic settlements to renewable energy ...

The potential of harnessing wind and solar in Arctic locations is significant, and when utilised together they have beneficial complementary properties. Energy efficiency is also of high importance, and policies and regulations should be directed towards improving energy efficiency and reducing energy usage.



Solving The Agenda: 11.15

ENERGY IN THE WEST NORDICS AND THE ARCTIC
oCO2 targets based on IEA policy scenarios 1. Electrification of road transport 2. Igaliku hybrid energy supply 3. Electrification of fishing vessels 4. Tourism 5. Decarbonizing Svalbard Scenario Analysis: Case Studies: CO2 tonnes per capita Greenland Iceland Faroe Islands Svalbard and Jan Mayen

Transitioning remote Arctic settlements to renewable energy ...

The potential of harnessing wind and solar in Arctic locations is significant, and when utilised together they have beneficial complementary properties. Energy efficiency is ...



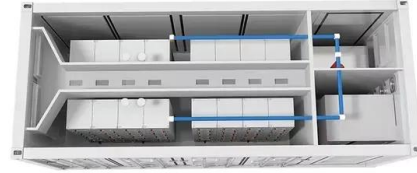
ENERGY IN THE WEST NORDICS AND THE ARCTIC

for creating knowledge to support energy and climate targets in the Nordics applies not just to the larger countries of the Nordic region, but also the more sparsely populated areas of the West Arctic; Greenland, Iceland, Faroe Islands, Jan Mayen, Svalbard and Arctic Ocean areas nearby these lands. These areas present unique energy challenges,



Deep-sea mining to support green transition? The ...

The area potentially concerned stretches from Svalbard to Jan Mayen Island, covering 280 000 square kilometers of Arctic seabed. Despite protests and warnings from environmental organizations, scientists and many ...



Contact Us

For catalog requests, pricing, or partnerships, please visit:
<https://www.fundacja64.pl>