

Tests required for solar container grid connection





Overview

Key electrical tests for this grid-tied inverter setup include insulation resistance testing, polarity checks, and open-circuit voltage (Voc) testing on the DC side. The AC side is then verified for correct grid voltage and frequency before a controlled, sequential power-up. Connecting a solar and energy storage system to the grid is a milestone that goes beyond the physical installation. It requires passing a series of rigorous checks designed to protect the stability and safety of the entire power network. These checks are defined by utility grid codes, which are the. Professional Installation is Critical: Grid-tied solar systems require licensed electricians and multiple permits, with the interconnection process typically taking 2-8 weeks and costing \$200-\$2,000 in fees alone. Load-Side Connection Dominates Residential Installations: The 120% rule limits total. Guide to testing and commissioning grid-tied solar PV plants, covering pre-checks, electrical testing, inverter performance, and grid integration. Testing and commissioning a grid-tied solar PV power plant is a critical phase that ensures the system operates safely, efficiently, and in compliance. Engineering, Procurement and Construction (EPC) contractor. This is the process of assuring safe operation of a solar photovoltaic (PV) system and making sure it is compliant with environmental and planning requirements, meets design and performance objectives, and that any tests meet contractual. Faster, safer, traceable solar PV testing. It's in the bag. The PV150 Solarlink™ Test Kit contains more than simply the tools to meet all the commissioning test requirements of NABCEP and other international standards. It holds the secret to making it more efficient, easier and safer. Solarlink™. This encompasses the specifications and certifications that solar components must meet to qualify for grid connection. The parts of a solar energy system typically include solar panels, inverters, and mounting structures. Each of these components must adhere to strict performance and safety.



Tests required for solar container grid connection



What Commissioning Tests Satisfy Utility Grid Codes ...

Ace your grid connection with this breakdown of essential commissioning tests. Learn key procedures and standards for utility grid code compliance to ensure your solar and storage project ...

CSP Inspection and Testing Guidelines

Referring to the approved WERA regulations and SEC connection process, the inspection and testing are executed in Step 3 named as "REG Connection" phase. SEC's responsibilities at this stage will ...



Best practices for solar system commissioning and acceptance

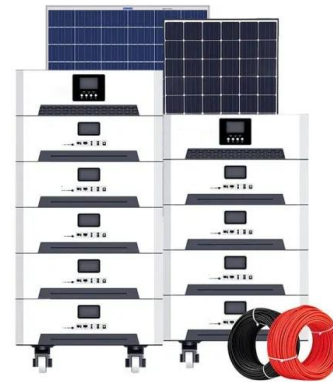
PERFORMANCE TESTS are conducted over a short period, ranging from three to ten days. The tests provide an immediate indication to the owner or investor whether the solar system's energy production at the ...

WTG Grid Compliance Testing and Validation Part 1: Grid ...

Grid compliance testing and validation of Wind Turbine Generators (WTG) has typically been performed on a full-scale proto- type. However, with the industry being confronted with more



demanding and ...

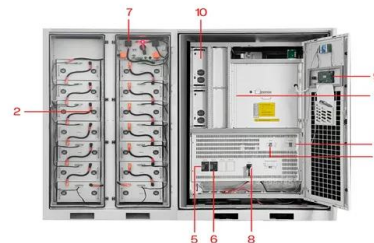


Solar Permitting Guidebook 4th Edition

3 These sections recommend a streamlined local permitting process for small, simple solar PV and solar water heating installations (including both solar domestic water Part heating ...

How To Connect Solar To Grid: Complete Installation Guide (2025)

Learn how to safely connect solar panels to the electrical grid with our comprehensive guide covering permits, installation steps, safety requirements, and code compliance.



- 1 PCS Module
- 2 Battery room
- 3 Grid side circuit breaker
- 4 Load side circuit breaker
- 5 OPV1 side circuit breaker
- 6 OPV2 side circuit breaker
- 7 High Volt Box
- 8 BAT side circuit breaker
- 9 LCD display screen
- 10 MPPT



Connecting to the Grid: Requirements for Renewable Energy Projects

8. Conclusion Grid connection is a critical aspect of renewable energy projects, enabling the efficient utilization of clean energy resources. Meeting technical requirements, complying with ...



How to ensure you have a compliant PV installation

Additionally data from the Solar Victoria Solar Homes program shows the most significant area of non-compliance is in regards to the correct earthing requirements of PV systems. This data is a possible ...



Solar PV Installation Guidelines

The Solar PV Installation Guidelines are aligned with the National Solar PV Service Technician Qual-ification and assists the Solar PV installer to use international best practices when installing and ...

Testing and Commissioning a Grid-Tied Solar PV Power Plant

This process involves verifying electrical connections, assessing system performance, testing protection devices, and confirming that the plant is ready for grid integration. Here's a detailed ...



Contact Us

For catalog requests, pricing, or partnerships, please visit:
<https://www.fundacja64.pl>