

# The following does not belong to electrochemical solar container



100KWH/215KWH

LIQUID/AIR COOLING

IP54/IP55

BATTERY 6000 CYCLES



## Overview

---

A photovoltaic cell, also known as a solar cell, is not an electrochemical cell. It is a solid-state device that directly converts sunlight into electricity through the photovoltaic effect. The Photovoltaic cell does not belong to the category of electrochemical cells because it converts light energy to electricity through the photovoltaic effect rather than through electrochemical reactions. The option that does not belong in the category of electrochemical cells is b) Photovoltaic. Which of the following does not belong in the category of electrochemical cells?

The correct answer is Photovoltaic cell Concept:- Electrochemical Cells: Devices that either generate electrical energy from chemical reactions (voltaic/galvanic cells) or use electrical energy to induce chemical. An electrochemical cell that generates electrical energy is a. Choose one answer. a. electrolytic cell. b. None of the above c. electroplating cell. d. voltaic (galvanic) cell. a. electrolytic cell An electrochemical cell that generates electrical energy is a. Choose one answer. a. electrolytic. It enables the efficient use of generated energy from various sources, particularly renewables like solar The option that does not belong in the category of electrochemical cells is b) Photovoltaic cell. Electrochemical cells include both galvanic cells and electrolytic cells, which involve the use. Which of the following is not a type of electrochemical cell?

a)Voltaic cell b)Photovoltaic cell c)Electrolytic cell d)Fuel Cell Correct answer is option 'B'. Can you explain this answer?

- EduRev Class 12 Question Class 12 Exam > Class 12 Questions > Which of the following is not a type of elect. As the photovoltaic (PV) industry continues to evolve, advancements in does not belong to electrochemical solar container have become critical to optimizing the utilization of renewable energy sources. From innovative battery technologies to intelligent energy management systems, these solutions.



## The following does not belong to electrochemical solar container

---

### Which of the following does not belong in the category of



Photovoltaic cell, however, does not fit in the category of electrochemical cells because it converts light energy directly into electrical energy through the photovoltaic effect, not through chemical reactions.

### Which major does electrochemical solar container belong to

The option that does not belong in the category of electrochemical cells is b) Photovoltaic cell. Electrochemical cells include both galvanic cells and electrolytic cells, which involve the use and



### BYJU'S Online learning Programs For K3, K10, K12, NEET, JEE, ...



3. Which of the following does not affect the reactions in a fuel cell? (a) Electrolyte composition (b) Electrode composition (c) A combination of fuel and oxidiser (d) Catalytic effect of the reaction ...

### Which of the following is not an electrochemical cell?

In this cell oxidation occurs at anode and reduction occurs at cathode. Photovoltaic cell is not an electrochemical cell. Photovoltaic cell converts solar energy into electrical energy with



process ...

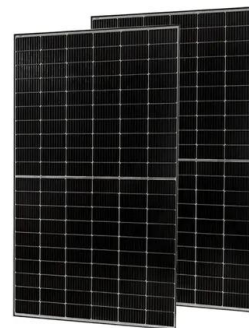


### Which of the following does not belong in the category of

The Photovoltaic cell does not belong to the category of electrochemical cells because it converts light energy to electricity through the photovoltaic effect rather than through electrochemical ...

### What scale of solar container does electrochemical solar container

What scale of solar container does electrochemical solar container belong to As the photovoltaic (PV) industry continues to evolve, advancements in scale of solar container does electrochemical solar ...



### Electrochemical Cells: Definition of Electrochemical ...

Types of Electrochemical cell Electrochemical cells are classified into two categories: Galvanic or voltaic cell Electrolytic cell Electrochemical cell that ...



## Chemistry Electrochemistry Quiz study guide :) Flashcards

Which of the following is not an example of an electrochemical cell? Choose one answer. A cell is constructed in which the reactions represented by the following equations is possible.

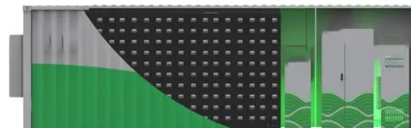


### Which of the following do not belong to the solar system?

The question asks us to identify which object from the given options does not belong to the solar system. The solar system includes the Sun, planets, dwarf planets, moons, asteroids, comets, and other ...

### Which of the following is not in the category of ...

Electrochemical cells are devices that convert chemical energy into electrical energy or vice versa. Voltaic cells, electrolytic cells, and fuel cells are all types of ...



### Which of the following does not belong in the category of

Which of the following does not belong in the category of electrochemical cells? (A) Voltaic cell (B) Photovoltaic cell (C) Electrolytic cell (D) More than one of the above (E) None of the ...



### Which of the following does not belong in the category of

An electrochemical cell is a device capable of either generating electrical energy from chemical reactions or using electrical energy to drive chemical reactions



### THE POWER OF SOLAR ENERGY CONTAINERS: A ...

Solar energy containers offer a reliable and sustainable energy solution with numerous advantages. Despite initial cost considerations and power limitations, their benefits outweigh the ...



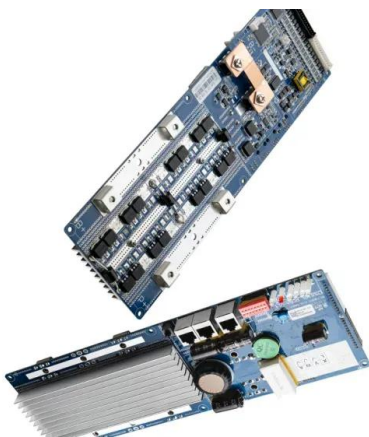
### Which of the following does not belong in the category of

3 Electrolytic cell is a type of electrochemical cell that uses electrical energy to drive a non-spontaneous chemical reaction 4 Therefore, the correct answer is b. photovoltaic cell



### Which of the following is not a type of electrochemical cell? a) Voltaic

Explanation: A photovoltaic cell is not a type of electrochemical cell. Here's why: 1. Voltaic Cell: A voltaic cell, also known as a galvanic cell, is an electrochemical cell that converts chemical energy into ...





## Electrochemical Energy Storage , Energy Storage Options and Their

Electrochemical energy storage systems have the potential to make a major contribution to the implementation of sustainable energy. This chapter describes the basic principles of ...



### Reference PDF.docx

Gibbs free energy is a property that is defined for an electrochemical cell and is a broad characteristic because it is dependent on the amount of material present. 3. Which of the following does not belong ...

### Which of the following is not a type of electrochemical cell?

It converts solar energy into electrical energy without involving electrochemical reactions. Given this understanding, we can conclude that the option that does not fit the category of ...



### The Solar Cell and the Electrochemical Cell , Springer Nature Link

We derive the conversion efficiencies of solar cells under various conditions in the chapters following Chap.& #160; 3 . For our discussions on the solar cell conversion efficiency, it is extremely ...



### Which of the following does not belong in the category of electrochemical

The one that does not belong in the category of electrochemical cells is the photovoltaic cell. A photovoltaic cell, also known as a solar cell, is a device that converts light energy into electrical ...



### Which of the following does not belong in the category of

The one that does not belong in the category of electrochemical cells is the photovoltaic cell. A photovoltaic cell, also known as a solar cell, is a device that converts light energy into electrical ...

### ?? ???? : Which of the following does not belong in the category of

Electrochemical cells are devices that convert chemical energy into electrical energy or vice versa. Voltaic cells, also known as galvanic cells, are electrochemical cells that generate electricity through ...



Deye Official Store 10 years warranty



### Batteries and Fuel Cells , Chemistry: Atoms First

Would this make a good battery for smartphones? Why or why not? Why do batteries go dead, but fuel cells do not? Explain what happens to battery voltage as a battery is used, in terms of the Nernst ...



**Which of the following is not a type of electrochemical cell?**

It does not involve redox reactions and is used in solar panels to harness sunlight. Among these, the photovoltaic cell is not considered an electrochemical cell because it works through a ...



## Contact Us

---

For catalog requests, pricing, or partnerships, please visit:  
<https://www.fundacja64.pl>