

# **The pressure of the solar container liquid cooling pipeline drops**





## Overview

---

A rule of thumb is for the pressure drop per pipe length in the collector to be slightly more than three times the pressure drop per pipe length in the general piping system. With these large solar thermal systems it is advised to design the collector loop system as a low. The pressure drop over a solar collector is an important parameter for system designers. It is becoming increasingly important as the focus on energy efficiency is getting stronger and the designer should minimize the energy needed for pumping yet maintaining flow rates that allows the collectors. This work presents a steady-state model of a generic liquid air power plant integrated with parabolic trough solar collectors, explores the plant design space, and maximizes its energy and exergy performance. Th. [pdf] Solar refrigeration tubes are integral components of solar thermal systems. With the deeper understanding of the pressure drops and flow channels the cooling systems can be optimized and unnecessary costs and oversizing or undersizing can be avoided. Cooling station oversizing may cause: Cooling station undersizing may cause: Understanding the basics of the pressure losses. solutions are options for cost effective deployments. The authors have focused on positive pressure liqu Advanced Cooling Solution (ACS) cold plate community. The document is focused on liquid cooling integration specifically within the Technology Cooling System (TCS), which includes cooling. The flow through each solar collector should have basically the same pressure drop. This will ensure that the system is balanced such that each collector is receiving the same flow rate of heat transfer fluid. Thus the fluid temperature increase of each collector will be equal to the others. With. Will there be a pressure drop in the pipe due to the cooling?

Edit: I have done some more research on the topic and it seems that what I'm considering is a case of a so-called Rayleigh flow. I tried to solve it this way:  $p = \rho r T$  (equation of state)  $p + \rho v^2 = Cst$   $p + \rho v^2 = C s t$ .



## The pressure of the solar container liquid cooling pipeline drops



### Modelling the pressurization induced by solar radiation ...

In fact, the solar radiation can expose above ground pipeline sections at pressure values above the maximum Design Pressure with resulting risks and ...

### PRINCIPLES OF LIQUID COOLING PIPELINE DESIGN

Solar refrigeration tubes are integral components of solar thermal systems designed to harness solar energy for refrigeration and cooling purposes. Their primary function is to absorb sunlight, converting ...



### A numerical model for pressure drop and flow distribution in a solar

This study presents a numerical model calculating the pressure drop and flow distribution in a solar collector with U-type harp configuration in isothermal conditions. The flow maldistribution in ...

### Modelling the pressurization induced by solar radiation on above

...

In fact, the solar radiation can expose above ground pipeline sections at pressure values above the maximum Design Pressure with



resulting risks and problems.



### The effect of using non-Newtonian nanofluid on pressure drop and ...

The flow of non-Newtonian nanofluids (NNFs) within a lithium-ion battery coupled to a solar cooling system (Li-iBCS) is investigated in this paper. A capillary Li-iBCS is put on the anode ...

### Collective effects of leakage, temperature changes, and ...

Collective effects of leakage, temperature changes, and entrapped air during hydrostatic testing D URING HYDROSTATIC TESTING of pipelines, leaks in the test section will result in a loss of test ...



### Evaluation of pressure levels in pipelines due to solar heat gains

A detailed numerical model based on a lumped capacity analysis, is developed for assessing potential pressure increases in pipelines due to solar energy gains. Test computations for ...





## Balancing fluid flow in collector field

The flow through each solar collector should have basically the same pressure drop. This will ensure that the system is balanced such that each collector is receiving the same flow rate of heat transfer fluid.



## PRESSURE DROP ANALYSIS IN COOLING WATER NETWORKS

This paper develops a methodology for the pressure drop calculation based on the Graph Theory. From the adjacency matrix of cooler network, it uses the topological sorting and critical path algorithms in ...

## Study on uniform distribution of liquid cooling pipeline in ...

One is to change the pressure drop in the tertiary pipeline by different orifice plate sizes, and the other is to design different flow branches by changing the secondary pipeline branches. The ...



## PRESSURE DROP ANALYSIS IN COOLING WATER NETWORKS

Although cooling water reuse can reduce both cooling water and cooling tower re-quirements, the pressure drop in the heat-exchanger network can significantly increase when compared to the ...



## DESIGN AND ANALYSIS OF LIQUID COOLING PLATES FOR ...

icient way. A liquid cooling plate acts as a heat sink enclosed by materialized walls. This work aims to carry out design of liquid cool-ing plates such that the heat diffused by the ele. tronic equipment is ...



## Quality Assurance in solar thermal heating and cooling technology

This document aims at explaining the theory behind the pressure drop over a solar collector and how the pressure drop is related to various heat transfer media.

## Natural circulation in water cooled nuclear power plants

In recent years it has been recognized that the application of passive safety systems (i.e. those whose operation takes advantage of natural forces such as convection and gravity), can contribute to ...



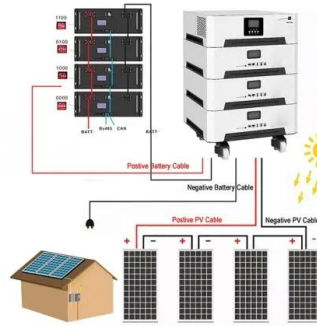
## Liquid Cooling Energy Storage System Pipeline: The Future of ...

your energy storage system is throwing a pipeline party, but the heat keeps crashing it. That's where liquid cooling energy storage system pipelines come in - the ultimate bouncers for ...



## A review on enhancement of solar photovoltaic (PV) system ...

This study focuses on the challenges of using nanofluids for solar photo- voltaic cooling systems, such as nanofluid's stability, pressure drop, and friction factor, which are considerable obstacles when ...



## Enhancing Solar Panel Efficiency with Liquid Cooling Technology

A liquid cooling system sets up cooling channels on the back of the solar panel, allowing coolant to flow continuously and carry away the accumulated heat. Compared to natural heat dissipation, it provides ...

## DESIGN AND ANALYSIS OF LIQUID COOLING PLATES FOR ...

A number of thermal management devices are used to actuate concentrated elec-tronic appliances in an efficient way. A liquid cooling plate acts as a heat sink enclosed by materialized walls. This work ...



## Investigation on the pressure drop characteristics of ITER thermal

The cooling pipe should cover the whole panel surface as evenly as possible with satisfying the maximum pressure drop requirement. Therefore, the TS pipe routing has many curved ...



### Study on uniform distribution of liquid cooling pipeline in container

Designing a liquid cooling system for a container battery energy storage system (BESS) is vital for maximizing capacity, prolonging the system's lifespan, and improving its safety. In this paper, we ...

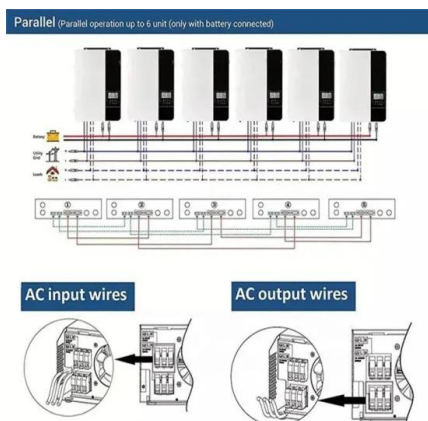


### Study on uniform distribution of liquid cooling pipeline in container

In engineering, it is common for BESS to use a liquid cooling system, where the chiller first supplies water to the primary pipeline and then distributes the cooling water to the secondary ...

### Study on uniform distribution of liquid cooling pipeline in container

A self-developed thermal safety management system (TSMS), which can evaluate the cooling demand and safety state of batteries in realtime, is equipped with the energy storage ...



### Pressure drop in a pipe due to cooling

Consider a pipe of constant section in which an ideal gas is flowing with negligible friction. Somewhere along this pipe there is a cooler, and  $T_{in} > T_{out}$ . Assume the cooler is frictionless as well and of ...



## Contact Us

---

For catalog requests, pricing, or partnerships, please visit:  
<https://www.fundacja64.pl>