

Wall that absorbs light and stores energy





Overview

A Trombe wall, also known as a solar wall, is a masonry wall with high thermal mass used to passively store solar energy in a home. The sun-facing wall is separated from the outdoors by glazing and an air space, and absorbs solar energy and slowly releases it toward the building's interior. A Trombe wall is a massive equator-facing wall that is painted a dark color in order to absorb thermal energy from incident sunlight and covered with a glass on the outside with an insulating air-gap between the wall and the glaze. A Trombe wall is a passive solar building design strategy that. It's a clever, energy-saving structure that captures solar energy to heat your home naturally. Named after French engineer Felix Trombe, this passive solar heating system has been revolutionizing sustainable living since the 1960s. But what exactly is a Trombe wall?

Imagine a thick, dark-colored. ancient times people have used thick walls of adobe or stone to trap the sun's heat during the day and release it slowly and evenly at night. Today's passive solar buildings often improve on this ancient technique by incorporating a thermal storage and delivery system called a Trombe wall. Named. Learn how a massive concrete wall collects and stores solar energy through a bank of specially placed windows to help heat this Michigan home. Synopsis: Orienting windows to face the north—the location of the views for this Michigan home—typically limits a home's ability to reap any potential. The standard Trombe wall places a glass panel approximately 2- to 5-centimeters from a 10- to 41-centimeter-thick dark masonry wall, often made of bricks, stone, or concrete. Solar heat passes through the glass, is absorbed by the thermal mass wall, and then slowly releases into the home. Whereas. A Trombe wall, also known as a solar wall, is a masonry wall with high thermal mass used to passively store solar energy in a home. The sun-facing wall is separated from the outdoors by glazing and an air space, and absorbs solar energy and slowly releases it toward the building's interior at.



Wall that absorbs light and stores energy



The Ultimate Guide to Trombe Walls: Passive Solar Heating for

But what exactly is a Trombe wall? Imagine a thick, dark-colored wall, usually made of materials like concrete, brick, or stone. Now place a glass panel a few centimeters away from it. This ...

What Absorbs Energy and How Does It Work?

This absorbed light energy then powers the conversion of carbon dioxide and water into glucose, a sugar molecule that stores chemical energy, and oxygen. The process transforms radiant ...



Building a Better Trombe Wall

But underneath the paint is a foot-thick concrete wall that absorbs and stores the heat in Arizona's abundant sunshine. This Trombe wall is actually an extension of the building's foundation, which ...

Thermal Storage Wall

A thermal storage wall is defined as a south-facing wall, often made of concrete or other massive materials, that utilizes glass or plastic coverings to capture solar radiation, storing heat for nighttime ...

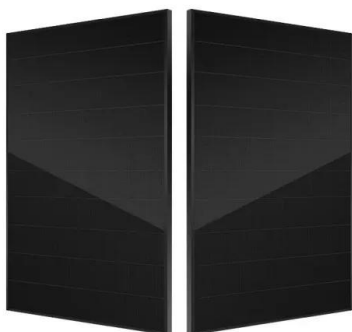


If both radio waves and gamma rays can travel through walls

A material such as lead has unoccupied (electron) energy levels that are just right so that if visible light is incident upon the material, electrons can be promoted to these levels if the light is absorbed.

Physics Tutorial: Light Absorption, Reflection, and ...

The manner in which visible light interacts with an object is dependent upon the frequency of the light and the nature of the atoms of the object. In this section of ...



Cool Roofs and Walls to Reduce Heat Gain

But all solar energy, whether visible light or non-visible infrared radiation, becomes thermal energy (heat) when it is absorbed by a surface such as a roof. Therefore, the ideal cool roof or wall would be ...



MIT School of Engineering , » Are there materials that can absorb heat

Are there materials that can absorb heat without becoming hot? There are, and they have some surprising uses... By Sarah Jensen It's easy to tell if the steering wheel of your car, the surface of a ...



Trombe wall

A Trombe wall is a massive equator-facing wall that is painted a dark color in order to absorb thermal energy from incident sunlight and covered with a glass on the outside with an insulating air-gap ...

Trombe Wall

A Trombe wall is defined as a south-oriented dark wall with a significant thermal mass that absorbs solar radiation and subsequently heats the air in an adjacent room through radiation and convective heat ...



Materials That Absorb & Reflect Solar Energy

A material's color and shade affect the amount of light it absorbs or reflects; dark colors reflect less light to your eye, so they absorb more light. A "flat black" ...



A Trombe Wall Solution for Passive-Solar Storage

Here, a passive-solar heating strategy called a Trombe wall collects heat from the sunlight on the southern side of the house and stores it in the wall to distribute into the conditioned ...

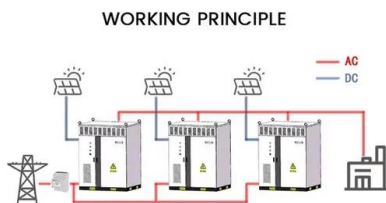


Trombe Walls

A Trombe wall, also known as a solar wall, is a masonry wall with high thermal mass used to passively store solar energy in a home. The sun-facing wall is separated from the outdoors by glazing and an ...

Chlorophyll

A photosynthetic unit absorbs light energy. Red and blue wavelengths of light are absorbed. Green light cannot be absorbed by the chlorophyll and the light is reflected, making the plant appear green. ...



Photosynthesis, Chloroplast , Learn Science at Scitable

Chlorophyll, the primary pigment used in photosynthesis, reflects green light and absorbs red and blue light most strongly. In plants, photosynthesis takes place in chloroplasts, which contain the



NR Thermal Mass , NJ Green Building Manual

Direct gain uses south-facing windows to collect sunlight and absorbs and stores heat with thermal mass materials such as masonry floors and walls. Indirect gain places thermal mass between south-facing ...



Solar Wall or Trombe Wall

Thermal storage walls, as solar walls are often called, are exactly what their name implies- walls built primarily to store heat. The most effective place to build them is directly inside the windows, so that ...

Building a Better Trombe Wall

When viewed from inside the home, the Trombe wall appears no different than other walls. But underneath the paint is a foot-thick concrete wall that absorbs and stores the heat in Arizona's ...



Trombe Walls

Trombe Walls by Nick Gromicko, CMI® A Trombe wall, also known as a solar wall, is a masonry wall with high thermal mass used to passively store solar energy in a home. The sun-facing wall is ...



Storage Wall

A storage wall, also known as a Trombe wall or Solar Heating Wall (SHW), is defined as a massive vertical structure made of materials with high thermal inertia, designed to absorb solar radiation and ...



Contact Us

For catalog requests, pricing, or partnerships, please visit:
<https://www.fundacja64.pl>