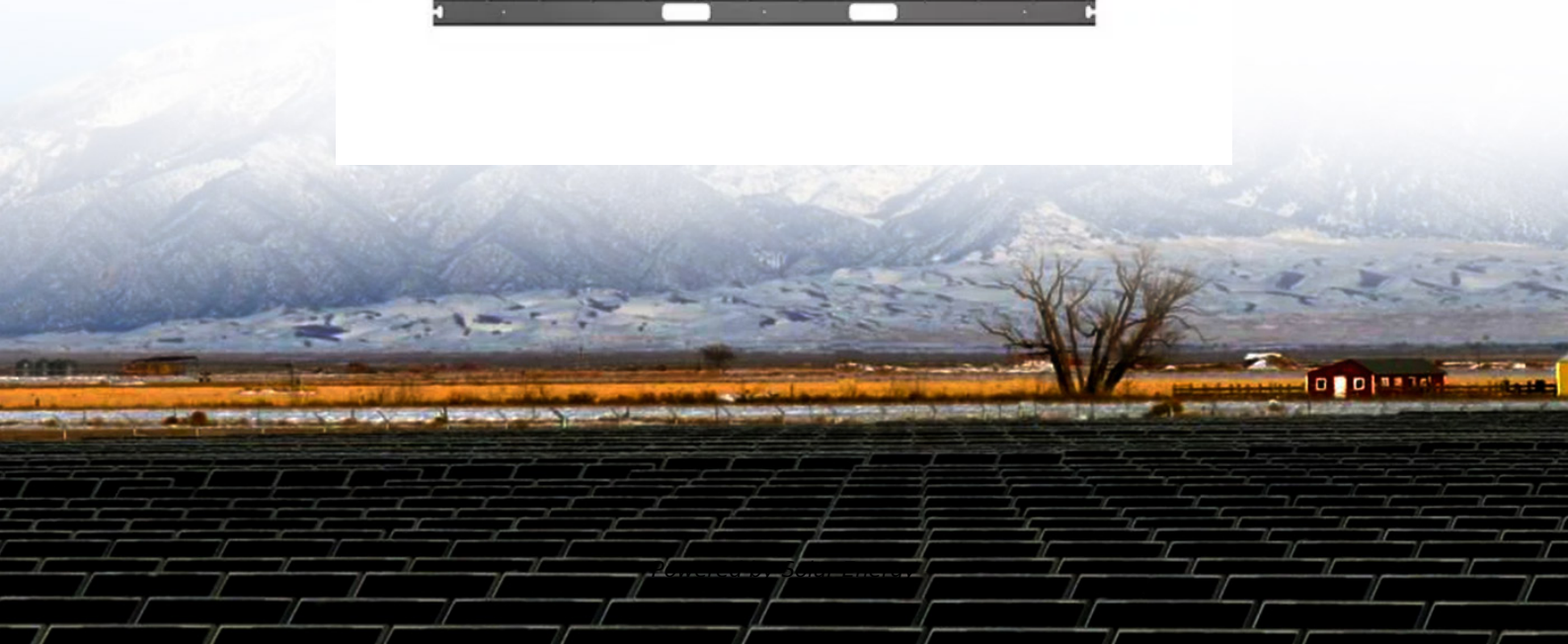


What is the working principle of the electric thermal solar container power station





Overview

Solar thermal-electric power systems collect and concentrate sunlight to produce the high temperatures needed to generate electricity. All solar thermal power systems have solar energy collectors with two main components: reflectors (mirrors) that capture and focus sunlight onto a receiver. In most concentrating solar power (CSP) systems, the sun's rays are reflected onto a receiver, which creates heat that is used to generate electricity that can be used immediately or stored for later use. This enables CSP systems to be flexible, or dispatchable, options for providing clean, renewable energy. Indeed, a photovoltaic thermal power plant uses mirrors or lenses to concentrate sunlight onto a receiver and heavy heat is created there. This heat is used to produce steam by heating a working fluid like water or molten salt. However, steam goes through the steel pipe with high pressure and hits the turbine. Explore how solar thermal power plants convert sunlight into electricity, harnessing renewable energy for sustainable power generation. Solar thermal power plants utilize the sun's energy to generate electricity through thermal energy conversion. This article explores the functioning, components. Thermal solar power plants use lenses to concentrate sunlight and heat a fluid. Later, the system uses this fluid to produce steam that drives turbines connected to power generators. If you use liquids that can hold this warmth for a long time, you can generate electricity even after sunset. Solar thermal power plants are electricity generation plants that utilize energy from the Sun to heat a fluid to a high temperature. This fluid then transfers its heat to water, which then becomes superheated steam. This steam is then used to turn turbines in a power plant, and this mechanical energy is converted into electricity.



What is the working principle of the electric thermal solar container



Thermal energy storage

Steam accumulators may take on a significance for energy storage in solar thermal energy projects. Heat storage tanks are being used globally, primarily in regions with established district heating ...

Solar thermal power plants

Solar thermal power plants work like a conventional steam power plant in which the fuel is replaced by concentrated solar radiation. They use various systems of tracking mirrors to focus the sunlight.



The working principle of electrochemical solar container power ...

The working principle of electrochemical solar container power station is Are solar energy containers a viable energy solution? Solar energy containers offer a reliable and sustainable energy solutionwith ...



Solar explained Solar thermal power plants

Solar thermal-electric power systems collect and concentrate sunlight to produce the high temperatures needed to generate electricity. All solar thermal power systems have solar energy



...



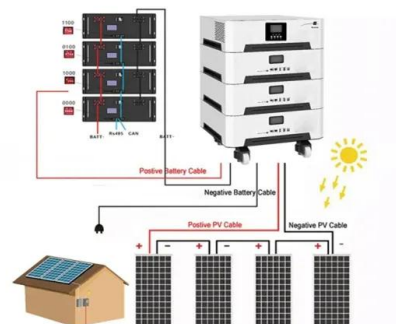
Solar Thermal Power Plant

A solar thermal power plant is a facility composed of high-temperature solar concentrators that convert absorbed thermal energy into electricity using power generation cycles. In solar thermal power ...



Concentrating Solar-Thermal Power Basics , Department of Energy

For example, single dish/engine systems can produce 5 to 25 kilowatts of power per dish and be used in distributed applications. Learn more about concentrating solar-thermal power research in the Solar ...



Energy storage(KWH)

102.4kWh

Nominal voltage(Vdc)

512V

Outdoor All-in-one ESS cabinet



Construction and Working of Solar Thermal Power Plant

The construction and working of solar thermal power plant is a simple like other conventional thermal power plants. Indeed, a photovoltaic thermal power plant uses mirrors or lenses ...



How Does Solar Work? , Department of Energy

Below, you can find resources and information on the basics of solar radiation, photovoltaic and concentrating solar-thermal power technologies, electrical grid systems integration, and the non ...



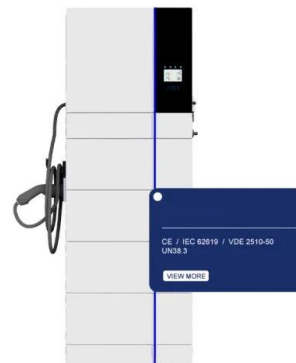
- Voltage range: 691.2-947.2V
- >6000 cycles(100%DOD)
- Rated battery capacity: 216KWH (customizable)
- EMS communication: 4G/CAN/RS485

Thermal Storage System Concentrating Solar-Thermal Power Basics

Thermal energy storage provides a workable solution to this challenge. In a concentrating solar power (CSP) system, the sun's rays are reflected onto a receiver, which creates heat that is used to ...

Thermal Storage System Concentrating Solar-Thermal ...

Two-tank direct storage was used in early parabolic trough power plants (such as Solar Electric Generating Station I) and at the Solar Two power tower in ...



CE / IEC 62519 / VDE 2510-50
UN38.3
[VIEW MORE](#)



Thermal Power Plant: How does it Work, Principle & Diagram

The generator converts the kinetic energy of the turbine impeller into electric energy. Understanding the Working of a Thermal Power Plant Thermal power plant play a crucial role in meeting the energy ...



Contact Us

For catalog requests, pricing, or partnerships, please visit:
<https://www.fundacja64.pl>