

# Working principle of the three-way solar container stop valve





## Overview

---

The operating principle of a three-way control valve can be summarized as follows: The actuator drives the valve core/seat and other internal components to change the connection between the three flow ports (inlet A, outlet B, and reversing port C), thereby achieving precise. To switch solar energy effectively using a three-way valve involves understanding the mechanics of both solar energy systems and the function of the valve itself. 1. The three-way valve enables efficient heating control, 2. Utilizing a three-way valve ensures optimal resource management, 3. Proper. Simply put, a three-way valve has three inlets and outlets; when the three-way merges, there are two in and one out, and the three-way split is one in and two out. It is controlled according to the shape of the spool. The most obvious difference in appearance between a three-way valve and a two-way. In the heating industry, a three-way control valve is a common fluid control component, often used to precisely control process parameters of media such as gas, liquid, and steam. It can replace two two-way control valves to regulate temperature and flow. Structurally, it typically consists of an. Three-way valve is designed to divide a circulation loop into a constant hydraulic mode loop and a variable hydraulic mode loop. Consumers requiring quality control are connected to the branch with constant hydraulic mode, while consumers with quantity control are connected to the branches with. A three way valve is a mechanical device with three ports (inlets/outlets) designed to control the flow of liquids or gases. Unlike two-way valves (which simply open/close), three way valves manage fluid paths by directing flow between ports —either mixing two inputs into one output or splitting. A 3-way valve is a versatile and efficient solution for controlling fluid flow in various applications. It allows for the mixing or diverting of fluid, making it a popular choice in industries such as HVAC, plumbing, and chemical processing. Let's dive into the world of valves and uncover their key.



## Working principle of the three-way solar container stop valve

### Understanding the Inner Workings of a 3-Way Valve



Learn about the schematic diagram of a 3-way valve and how it works in various applications. Explore the different components and operation of this essential valve.

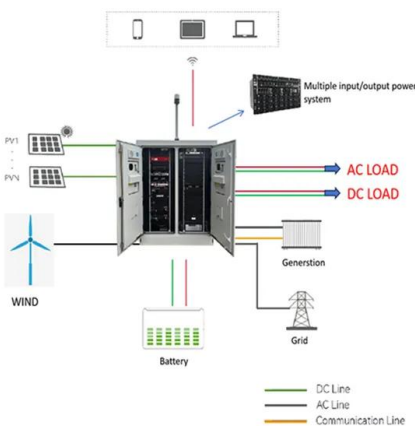
### Understanding the Inner Workings of a 3-Way Valve

Learn about the schematic diagram of a 3-way valve and how it works in various applications. Explore the different components and operation of this essential ...



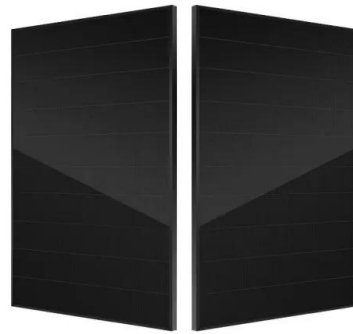
### How a 3 Way Directional Control Solenoid Valve Operates

A 3-way directional control solenoid valve has 3 pipe connections: the cavity port, the body orifice port and the stop port. It has 2 orifices: the body orifice and the stop orifice, one of which



### How to switch solar energy with a three-way valve

When solar collectors harvest energy, the three-way valve directs the heated fluid either to a storage reservoir or to heat distribution networks within a building.



### How Does A 3-Way Solenoid Valve Work?, Key ...

The Structure and Functionality of a 3-Way Solenoid Valve A 3-way solenoid valve has three ports: one inlet and two outlets or vice versa. Its unique design allows ...



### How Does a 3-Way Solenoid Valve Work? , Key Benefits Explained

Structure and Configuration of a 3-Way Solenoid Valve A 3-way solenoid valve consists of three ports: supply, exhaust, and output. These ports are arranged to manage the flow of the medium efficiently. ...



### How do three-way hydraulic valves work?

The three-way valve, a machined body with three ports, is a testament to their precision and adaptability. The most common three-way valves in hydraulics are ball valves, cartridge valves ...





## How A 3 Way Normally Closed Solenoid Valve Operates

A 3-way, normally closed, solenoid valve has 3 pipe connections: the cavity port, the body orifice port and the stop port. It has 2 orifices: the body orifice and the stop orifice, one of which is



## Unraveling the Functioning of 3 Way Solenoid Valves

When selecting 3-way solenoid valves it is important to consider the temperature and pressure of the fluid being use, the size and type of valve need, as well as ...

## Contact Us

---

For catalog requests, pricing, or partnerships, please visit:  
<https://www.fundacja64.pl>